

MZT1 rabbit pAb

Catalog No :	YT6510
Reactivity :	Human;Mouse
Applications :	IHC;IF
Target :	MZT1
Gene Name :	MZT1 C13orf37 MOZART1
Protein Name :	MZT1
Human Gene Id :	440145
Human Swiss Prot No :	Q08AG7
Mouse Gene Id :	76789
Mouse Swiss Prot No :	Q8BUR9
Immunogen :	Synthesized peptide derived from human MZT1 AA range: 19-69
Specificity :	This antibody detects endogenous levels of MZT1 at Human/Mouse
Formulation :	Liquid in PBS containing 50% glycerol, 0.5% BSA and 0.02% sodium azide.
Source :	Polyclonal, Rabbit,IgG
Dilution :	IHC 1:50-200. IF 1:50-200
Purification :	The antibody was affinity-purified from rabbit antiserum by affinity-chromatography using epitope-specific immunogen.
Concentration :	1 mg/ml
Storage Stability :	-15°C to -25°C/1 year(Do not lower than -25°C)

Molecularweight : 9kD

Function : similarity:Belongs to the UPF0582 family.,

Subcellular Location : Cytoplasm, cytoskeleton, microtubule organizing center, centrosome .
Cytoplasm, cytoskeleton, spindle .

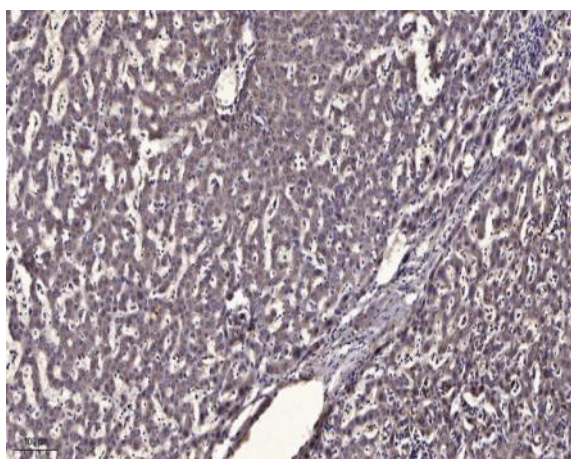
Sort : 10529

No4 : 1

Host : Rabbit

Modifications : Unmodified

Products Images



Immunohistochemical analysis of paraffin-embedded human liver cancer. 1, Antibody was diluted at 1:200(4° overnight). 2, Tris-EDTA,pH9.0 was used for antigen retrieval. 3,Secondary antibody was diluted at 1:200(room temperature, 45min).