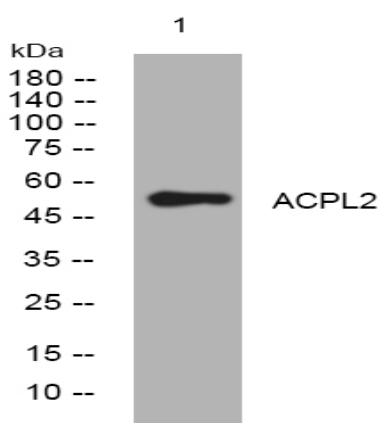


ACPL2 rabbit pAb

Catalog No :	YT6509
Reactivity :	Human;Mouse;Rat
Applications :	WB
Target :	ACPL2
Gene Name :	ACPL2 UNQ370/PRO706
Protein Name :	ACPL2
Human Gene Id :	92370
Human Swiss Prot No :	Q8TE99
Mouse Gene Id :	235534
Mouse Swiss Prot No :	Q8BHA9
Rat Gene Id :	315939
Rat Swiss Prot No :	Q66H78
Immunogen :	Synthesized peptide derived from human ACPL2 AA range: 201-251
Specificity :	This antibody detects endogenous levels of ACPL2 at Human/Mouse/Rat
Formulation :	Liquid in PBS containing 50% glycerol, 0.5% BSA and 0.02% sodium azide.
Source :	Polyclonal, Rabbit,IgG
Dilution :	WB 1:500-2000
Purification :	The antibody was affinity-purified from rabbit antiserum by affinity-chromatography using epitope-specific immunogen.

Concentration :	1 mg/ml
Storage Stability :	-15°C to -25°C/1 year(Do not lower than -25°C)
Molecularweight :	53kD
Function :	catalytic activity:A phosphate monoester + H(2)O = an alcohol + phosphate.,similarity:Belongs to the histidine acid phosphatase family.,
Subcellular Location :	Golgi apparatus membrane ; Single-pass type II membrane protein . Colocalizes to Golgi apparatus in a B3GAT3-dependent manner. .
Expression :	Widely expressed. Strongly expressed in spleen, fetal liver, moderately in placenta, pancreas, kidney, thymus and colon.
Sort :	1664
No4 :	1
Host :	Rabbit
Modifications :	Unmodified

Products Images



Western blot analysis of lysates from HpeG2 cells, primary antibody was diluted at 1:1000, 4° over night