

EXTL2 rabbit pAb

Catalog No :	YT6504
Reactivity :	Human;Mouse
Applications :	WB
Target :	EXTL2
Fields :	>>Glycosaminoglycan biosynthesis - heparan sulfate / heparin;>>Metabolic pathways
Gene Name :	EXTL2 EXTR2
Protein Name :	EXTL2
Human Gene Id :	2135
Human Swiss Prot No :	Q9UBQ6
Mouse Gene Id :	58193
Mouse Swiss Prot No :	Q9ES89
Immunogen :	Synthesized peptide derived from human EXTL2 AA range: 141-191
Specificity :	This antibody detects endogenous levels of EXTL2 at Human/Mouse
Formulation :	Liquid in PBS containing 50% glycerol, 0.5% BSA and 0.02% sodium azide.
Source :	Polyclonal, Rabbit,IgG
Dilution :	WB 1[?]500-2000
Purification :	The antibody was affinity-purified from rabbit antiserum by affinity-chromatography using epitope-specific immunogen.
Concentration :	1 mg/ml

Storage Stability : -15°C to -25°C/1 year(Do not lower than -25°C)

Molecularweight : 36kD

Function : catalytic activity:UDP-N-acetyl-D-glucosamine + beta-D-glucuronosyl-(1->3)-beta-D-galactosyl-(1->3)-beta-D-galactosyl-(1->4)-beta-D-xylosyl-proteoglycan = UDP + alpha-N-acetyl-D-glucosaminyl-(1->4)-beta-D-glucuronosyl-(1->3)-beta-D-galactosyl-(1->3)-beta-D-galactosyl-(1->4)-beta-D-xylosyl-proteoglycan.,function:Glycosyltransferase required for the biosynthesis of heparan-sulfate and responsible for the alternating addition of beta-1-4-linked glucuronic acid (GlcA) and alpha-1-4-linked N-acetylglucosamine (GlcNAc) units to nascent heparan sulfate chains.,online information:Exostosin-like 2,online information:GlycoGene database,pathway:Glycan metabolism; heparan sulfate biosynthesis.,PTM:The soluble form derives from the membrane form by proteolytic processing.,similarity:Belongs to the glycosyltransferase 47 family.,subcellular location:A soluble form is found in the serum.,tissue specifi

Subcellular Location : Endoplasmic reticulum membrane ; Single-pass type II membrane protein . ; [Processed exostosin-like 2]: Secreted. A soluble form is found in the serum.

Expression : Ubiquitous.

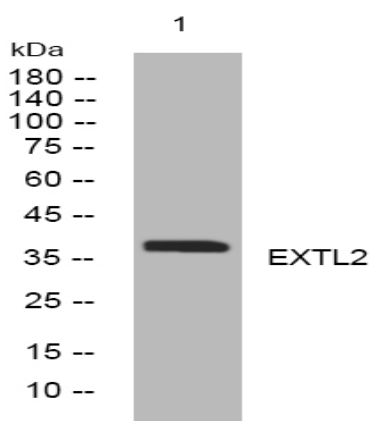
Sort : 5794

No4 : 1

Host : Rabbit

Modifications : Unmodified

Products Images



Western blot analysis of lysates from A431 cells, primary antibody was diluted at 1:1000, 4° over night