

## PEBP4 rabbit pAb

<b>Catalog No :</b>	YT6502
<b>Reactivity :</b>	Human;Mouse
<b>Applications :</b>	WB;ELISA;IHC
<b>Target :</b>	PEBP4
<b>Gene Name :</b>	PEBP4 CORK1 UNQ1933/PRO4408
<b>Protein Name :</b>	PEBP4
<b>Human Gene Id :</b>	157310
<b>Human Swiss Prot No :</b>	Q96S96
<b>Mouse Swiss Prot No :</b>	Q9D9G2
<b>Immunogen :</b>	Synthesized peptide derived from human PEBP4 AA range: 132-182
<b>Specificity :</b>	This antibody detects endogenous levels of PEBP4 at Human/Mouse
<b>Formulation :</b>	Liquid in PBS containing 50% glycerol, 0.5% BSA and 0.02% sodium azide.
<b>Source :</b>	Polyclonal, Rabbit,IgG
<b>Dilution :</b>	WB 1:500-2000;IHC 1:50-300; ELISA 2000-20000
<b>Purification :</b>	The antibody was affinity-purified from rabbit antiserum by affinity-chromatography using epitope-specific immunogen.
<b>Concentration :</b>	1 mg/ml
<b>Storage Stability :</b>	-15°C to -25°C/1 year(Do not lower than -25°C)
<b>Molecularweight :</b>	25kD

**Background :** The phosphatidylethanolamine (PE)-binding proteins, including PEBP4, are an evolutionarily conserved family of proteins with pivotal biologic functions, such as lipid binding and inhibition of serine proteases (Wang et al., 2004 [PubMed 15302887]).[supplied by OMIM, Dec 2008],

**Function :** function:Seems to promote cellular resistance to TNF-induced apoptosis by inhibiting activation of the Raf-1/MEK/ERK pathway, JNK and phosphatidylethanolamine externalization.,similarity:Belongs to the phosphatidylethanolamine-binding protein family.,tissue specificity:Ubiquitously expressed. Highly expressed in tumor cells.,

**Subcellular Location :** Secreted .

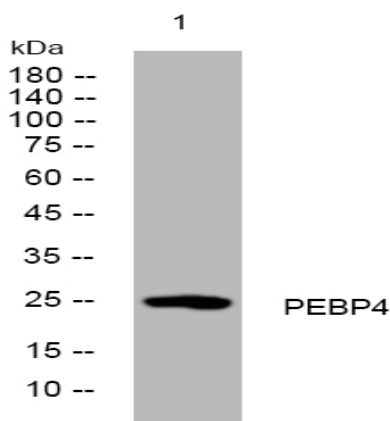
**Sort :** 11808

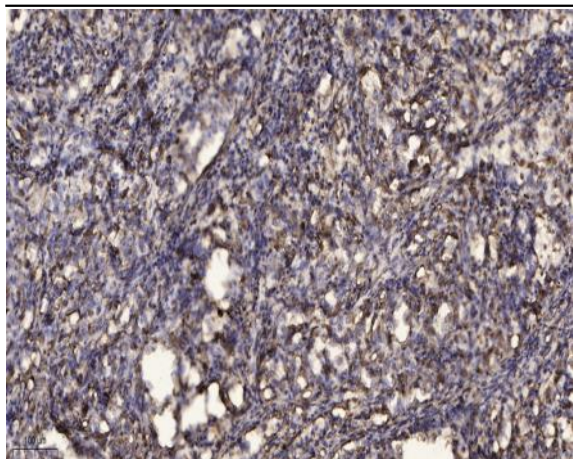
**No4 :** 1

**Host :** Rabbit

**Modifications :** Unmodified

## Products Images





Immunohistochemical analysis of paraffin-embedded human Squamous cell carcinoma of lung. 1, Antibody was diluted at 1:200(4° overnight). 2, Tris-EDTA,pH9.0 was used for antigen retrieval. 3,Secondary antibody was diluted at 1:200(room temperature, 45min).