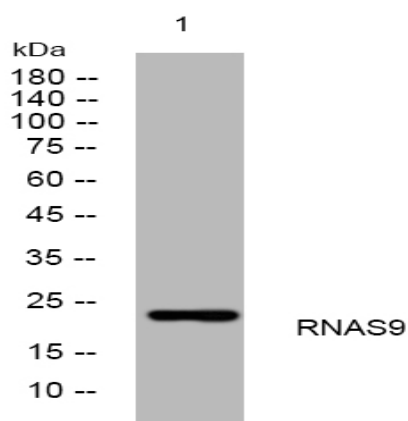


RNAS9 rabbit pAb

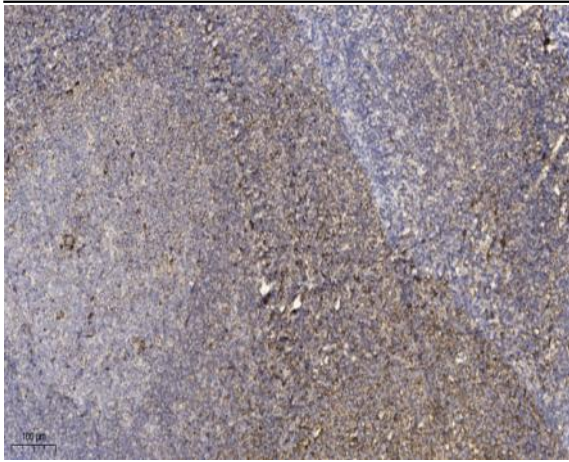
Catalog No :	YT6495
Reactivity :	Human;Mouse
Applications :	WB;ELISA;IHC
Target :	RNAS9
Gene Name :	RNASE9
Protein Name :	RNAS9
Human Gene Id :	390443
Human Swiss Prot No :	P60153
Mouse Gene Id :	328401
Mouse Swiss Prot No :	P60154
Immunogen :	Synthesized peptide derived from human RNAS9 AA range: 86-136
Specificity :	This antibody detects endogenous levels of RNAS9 at Human/Mouse
Formulation :	Liquid in PBS containing 50% glycerol, 0.5% BSA and 0.02% sodium azide.
Source :	Polyclonal, Rabbit,IgG
Dilution :	WB 1:500-2000;IHC 1:50-300; ELISA 2000-20000
Purification :	The antibody was affinity-purified from rabbit antiserum by affinity-chromatography using epitope-specific immunogen.
Concentration :	1 mg/ml
Storage Stability :	-15°C to -25°C/1 year(Do not lower than -25°C)

Molecularweight :	23kD
Function :	similarity:Belongs to the pancreatic ribonuclease family.,
Subcellular Location :	Secreted .
Expression :	At the mRNA level, widely expressed (PubMed:18992174). At protein level, restricted to epididymis (PubMed:19137000). Expressed in spermatozoa (sperm head and neck), with higher levels on ejaculated and epididymal sperm than on testicular sperm (at protein level). Expressed in the epithelial cells of the epididymal tubule (at protein level). Not detected in muscle.
Sort :	14552
No4 :	1
Host :	Rabbit
Modifications :	Unmodified

Products Images



Western blot analysis of lysates from HpeG2 cells, primary antibody was diluted at 1:1000, 4° over night



Immunohistochemical analysis of paraffin-embedded human tonsil. 1, Antibody was diluted at 1:200(4 ° overnight). 2, Tris-EDTA,pH9.0 was used for antigen retrieval. 3,Secondary antibody was diluted at 1:200(room temperature, 45min).