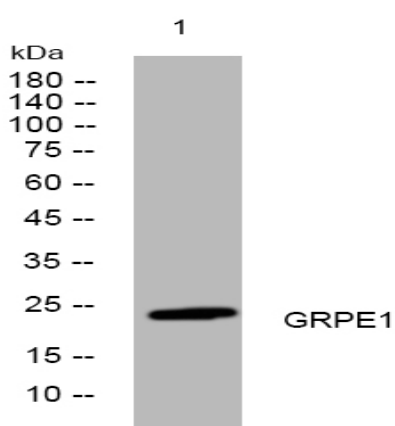


## GRPE1 rabbit pAb

<b>Catalog No :</b>	YT6493
<b>Reactivity :</b>	Human;Mouse;Rat
<b>Applications :</b>	WB
<b>Target :</b>	GRPE1
<b>Gene Name :</b>	GRPEL1 GREPEL1
<b>Protein Name :</b>	GRPE1
<b>Human Gene Id :</b>	80273
<b>Human Swiss Prot No :</b>	Q9HAV7
<b>Mouse Gene Id :</b>	17713
<b>Mouse Swiss Prot No :</b>	Q99LP6
<b>Rat Gene Id :</b>	79563
<b>Rat Swiss Prot No :</b>	P97576
<b>Immunogen :</b>	Synthesized peptide derived from human GRPE1 AA range: 159-209
<b>Specificity :</b>	This antibody detects endogenous levels of GRPE1 at Human/Mouse/Rat
<b>Formulation :</b>	Liquid in PBS containing 50% glycerol, 0.5% BSA and 0.02% sodium azide.
<b>Source :</b>	Polyclonal, Rabbit,IgG
<b>Dilution :</b>	WB 1:500-2000
<b>Purification :</b>	The antibody was affinity-purified from rabbit antiserum by affinity-chromatography using epitope-specific immunogen.

<b>Concentration :</b>	1 mg/ml
<b>Storage Stability :</b>	-15°C to -25°C/1 year(Do not lower than -25°C)
<b>Molecularweight :</b>	24kD
<b>Function :</b>	function:Essential component of the PAM complex, a complex required for the translocation of transit peptide-containing proteins from the inner membrane into the mitochondrial matrix in an ATP-dependent manner. Seems to control the nucleotide-dependent binding of mitochondrial HSP70 to substrate proteins.,similarity:Belongs to the grpE family.,subunit:Probable component of the PAM complex at least composed of a mitochondrial HSP70 protein, GRPEL1 or GRPEL2, TIMM44, TIMM16/MAGMAS and TIMM14/DNAJC19 (By similarity). Binds to HSP70, HSC70 and HSJ1B.,
<b>Subcellular Location :</b>	Mitochondrion matrix .
<b>Sort :</b>	7151
<b>No4 :</b>	1
<b>Host :</b>	Rabbit
<b>Modifications :</b>	Unmodified

## Products Images



Western blot analysis of lysates from AD293 cells, primary antibody was diluted at 1:1000, 4° over night