

## LRC4C rabbit pAb

<b>Catalog No :</b>	YT6491
<b>Reactivity :</b>	Human;Mouse
<b>Applications :</b>	WB;IHC
<b>Target :</b>	LRC4C
<b>Fields :</b>	>>Axon guidance;>>Cell adhesion molecules
<b>Gene Name :</b>	LRR4C KIAA1580 NGL1 UNQ292/PRO331
<b>Protein Name :</b>	LRC4C
<b>Human Gene Id :</b>	57689
<b>Human Swiss Prot No :</b>	Q9HCJ2
<b>Mouse Gene Id :</b>	241568
<b>Mouse Swiss Prot No :</b>	Q8C031
<b>Immunogen :</b>	Synthesized peptide derived from human LRC4C AA range: 524-574
<b>Specificity :</b>	This antibody detects endogenous levels of LRC4C at Human/Mouse
<b>Formulation :</b>	Liquid in PBS containing 50% glycerol, 0.5% BSA and 0.02% sodium azide.
<b>Source :</b>	Polyclonal, Rabbit,IgG
<b>Dilution :</b>	WB 1:500-2000;IHC 1:50-300
<b>Purification :</b>	The antibody was affinity-purified from rabbit antiserum by affinity-chromatography using epitope-specific immunogen.
<b>Concentration :</b>	1 mg/ml

**Storage Stability :** -15°C to -25°C/1 year(Do not lower than -25°C)

**Molecularweight :** 70kD

**Background :** NGL1 is a specific binding partner for netrin G1 (NTNG1; MIM 608818), which is a member of the netrin family of axon guidance molecules (Lin et al., 2003 [PubMed 14595443]).[supplied by OMIM, Mar 2008],

**Subcellular Location :** Cell junction, synapse, postsynaptic cell membrane ; Single-pass type I membrane protein .

**Expression :** Highly expressed in the cerebral cortex, including frontal, parietal and occipital lobes. Putamen, amygdala, hippocampus and medulla oblongata show moderate expression. Caudate nucleus and thalamus express small amounts, whereas other brain regions show very weak or no expression.

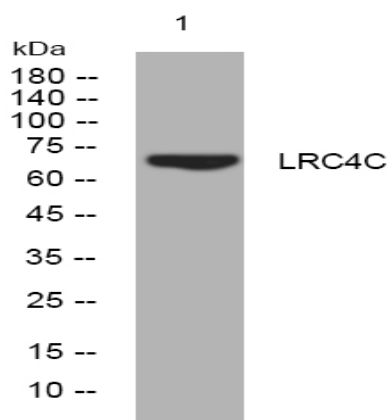
**Sort :** 9243

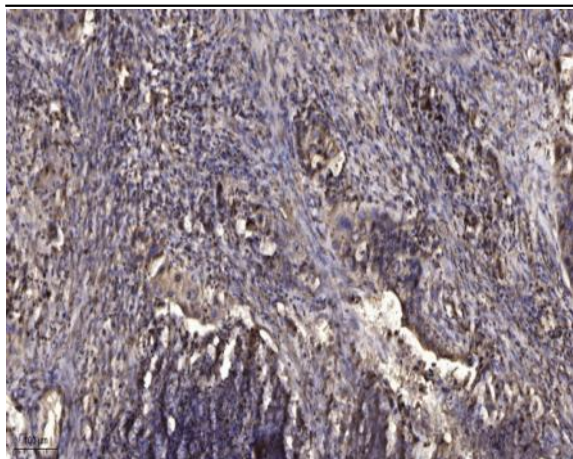
**No4 :** 1

**Host :** Rabbit

**Modifications :** Unmodified

## Products Images





Immunohistochemical analysis of paraffin-embedded human Squamous cell carcinoma of lung. 1, Antibody was diluted at 1:200(4° overnight). 2, Tris-EDTA,pH9.0 was used for antigen retrieval. 3,Secondary antibody was diluted at 1:200(room temperature, 45min).