

## RHBT2 rabbit pAb

<b>Catalog No :</b>	YT6490
<b>Reactivity :</b>	Human;Mouse
<b>Applications :</b>	WB;ELISA;IHC
<b>Target :</b>	RHBT2
<b>Fields :</b>	>>Ubiquitin mediated proteolysis
<b>Gene Name :</b>	RHOBTB2 DBC2 KIAA0717
<b>Protein Name :</b>	RHBT2
<b>Human Gene Id :</b>	23221
<b>Human Swiss Prot No :</b>	Q9BYZ6
<b>Mouse Gene Id :</b>	246710
<b>Mouse Swiss Prot No :</b>	Q91V93
<b>Immunogen :</b>	Synthesized peptide derived from human RHBT2 AA range: 573-623
<b>Specificity :</b>	This antibody detects endogenous levels of RHBT2 at Human/Mouse
<b>Formulation :</b>	Liquid in PBS containing 50% glycerol, 0.5% BSA and 0.02% sodium azide.
<b>Source :</b>	Polyclonal, Rabbit,IgG
<b>Dilution :</b>	WB 1:500-2000;IHC 1:50-300; ELISA 2000-20000
<b>Purification :</b>	The antibody was affinity-purified from rabbit antiserum by affinity-chromatography using epitope-specific immunogen.
<b>Concentration :</b>	1 mg/ml

**Storage Stability :** -15°C to -25°C/1 year(Do not lower than -25°C)

**Molecularweight :** 80kD

**Background :** The protein encoded by this gene is a small Rho GTPase and a candidate tumor suppressor. The encoded protein interacts with the cullin-3 protein, a ubiquitin E3 ligase necessary for mitotic cell division. This protein inhibits the growth and spread of some types of breast cancer. Three transcript variants encoding different isoforms have been found for this gene. [provided by RefSeq, Nov 2011],

**Function :** similarity:Belongs to the small GTPase superfamily. Rho family.,similarity:Contains 2 BTB (POZ) domains.,tissue specificity:Ubiquitous, with highest levels in neural tissues. Expression is also detected in fetal lung, heart, and brain.,

**Subcellular Location :** intracellular,cytosol,plasma membrane,

**Expression :** Ubiquitous, with highest levels in neural tissues. Expression is also detected in fetal lung, heart, and brain.

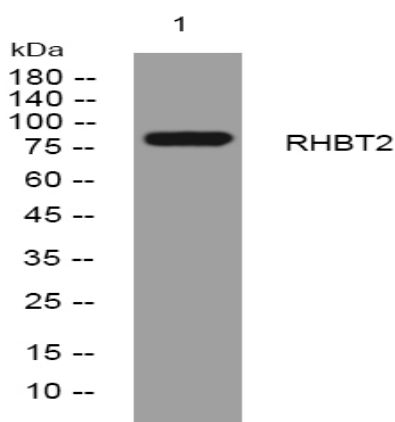
**Sort :** 14437

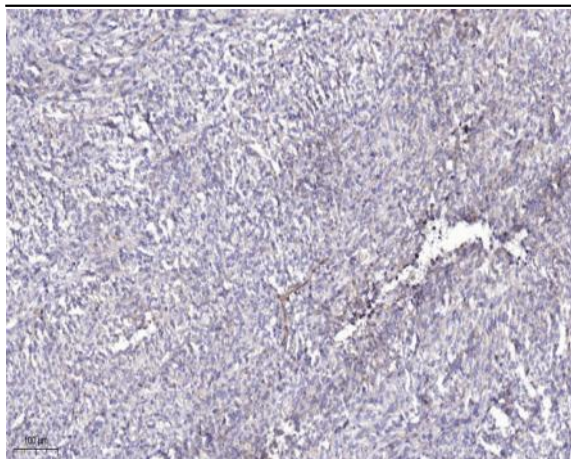
**No4 :** 1

**Host :** Rabbit

**Modifications :** Unmodified

## Products Images





Immunohistochemical analysis of paraffin-embedded human Colon cancer. 1, Antibody was diluted at 1:200(4° overnight). 2, Tris-EDTA,pH9.0 was used for antigen retrieval. 3,Secondary antibody was diluted at 1:200(room temperature, 45min).