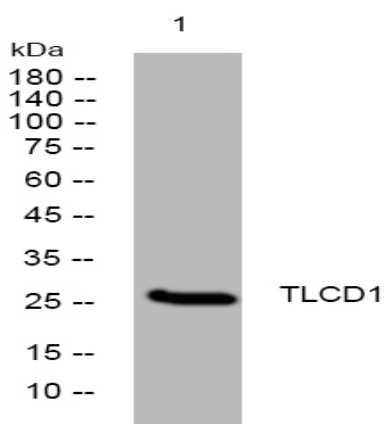


TLCD1 rabbit pAb

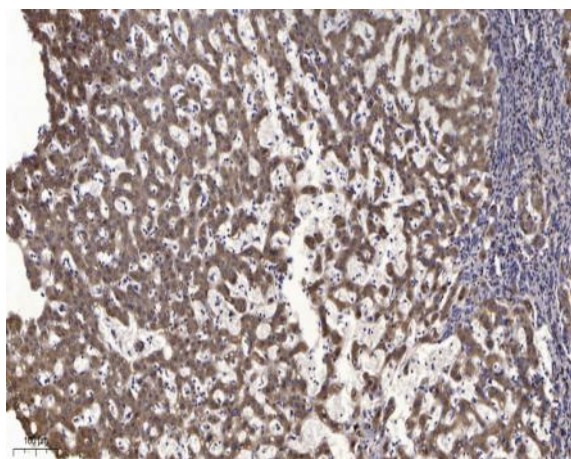
Catalog No :	YT6488
Reactivity :	Human;Mouse;Rat
Applications :	WB;ELISA;IHC
Target :	TLCD1
Gene Name :	TLCD1
Protein Name :	TLCD1
Human Gene Id :	116238
Human Swiss Prot No :	Q96CP7
Mouse Gene Id :	68385
Mouse Swiss Prot No :	Q99JT6
Rat Gene Id :	287472
Rat Swiss Prot No :	Q5U2T1
Immunogen :	Synthesized peptide derived from human TLCD1 AA range: 162-212
Specificity :	This antibody detects endogenous levels of TLCD1 at Human/Mouse/Rat
Formulation :	Liquid in PBS containing 50% glycerol, 0.5% BSA and 0.02% sodium azide.
Source :	Polyclonal, Rabbit,IgG
Dilution :	WB 1:500-2000;IHC 1:50-300; ELISA 2000-20000
Purification :	The antibody was affinity-purified from rabbit antiserum by affinity-chromatography using epitope-specific immunogen.

Concentration :	1 mg/ml
Storage Stability :	-15°C to -25°C/1 year(Do not lower than -25°C)
Molecularweight :	27kD
Function :	similarity:Contains 1 TLC (TRAM/LAG1/CLN8) domain.,
Subcellular Location :	Cell membrane ; Multi-pass membrane protein .
Sort :	17189
No4 :	1
Host :	Rabbit
Modifications :	Unmodified

Products Images



Western blot analysis of lysates from SW480 cells, primary antibody was diluted at 1:1000, 4° over night



Immunohistochemical analysis of paraffin-embedded human liver cancer. 1, Antibody was diluted at 1:200(4° overnight). 2, Tris-EDTA,pH9.0 was used for antigen retrieval. 3,Secondary antibody was diluted at 1:200(room temperature, 45min).