

## CHMP7 rabbit pAb

<b>Catalog No :</b>	YT6487
<b>Reactivity :</b>	Human;Mouse
<b>Applications :</b>	WB
<b>Target :</b>	CHMP7
<b>Fields :</b>	>>Endocytosis;>>Necroptosis
<b>Gene Name :</b>	CHMP7
<b>Protein Name :</b>	CHMP7
<b>Human Gene Id :</b>	91782
<b>Human Swiss Prot No :</b>	Q8WUX9
<b>Mouse Gene Id :</b>	105513
<b>Mouse Swiss Prot No :</b>	Q8R1T1
<b>Immunogen :</b>	Synthesized peptide derived from human CHMP7 AA range: 145-195
<b>Specificity :</b>	This antibody detects endogenous levels of CHMP7 at Human/Mouse
<b>Formulation :</b>	Liquid in PBS containing 50% glycerol, 0.5% BSA and 0.02% sodium azide.
<b>Source :</b>	Polyclonal, Rabbit,IgG
<b>Dilution :</b>	WB 1[?]500-2000
<b>Purification :</b>	The antibody was affinity-purified from rabbit antiserum by affinity-chromatography using epitope-specific immunogen.
<b>Concentration :</b>	1 mg/ml

**Storage Stability :** -15°C to -25°C/1 year(Do not lower than -25°C)

**Molecularweight :** 50kD

**Function :** function:Plays a role in the endosomal sorting pathway.,similarity:Belongs to the SNF7 family.,subcellular location:Diffused localization, with some punctate distribution, especially in the perinuclear area.,subunit:Interacts with CHMP4B, but not with VPS25.,

**Subcellular Location :** Cytoplasm . Nucleus envelope . Nucleus envelope . Diffused localization, with some punctate distribution, especially in the perinuclear area (PubMed:16856878). Localizes to the reforming nuclear envelope on chromatin disks during late anaphase (PubMed:26040712, PubMed:28242692). .

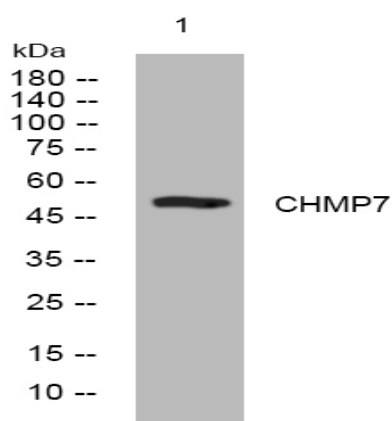
**Sort :** 3960

**No4 :** 1

**Host :** Rabbit

**Modifications :** Unmodified

## Products Images



Western blot analysis of lysates from VEC cells, primary antibody was diluted at 1:1000, 4° over night