

ESPB1 rabbit pAb

Catalog No :	YT6486
Reactivity :	Human
Applications :	WB
Target :	ESPB1
Gene Name :	ELSPBP1 E12
Protein Name :	ESPB1
Human Gene Id :	64100
Human Swiss Prot No :	Q96BH3
Immunogen :	Synthesized peptide derived from human ESPB1 AA range: 67-117
Specificity :	This antibody detects endogenous levels of ESPB1 at Human
Formulation :	Liquid in PBS containing 50% glycerol, 0.5% BSA and 0.02% sodium azide.
Source :	Polyclonal, Rabbit,IgG
Dilution :	WB 1:500-2000
Purification :	The antibody was affinity-purified from rabbit antiserum by affinity-chromatography using epitope-specific immunogen.
Concentration :	1 mg/ml
Storage Stability :	-15°C to -25°C/1 year(Do not lower than -25°C)
Molecularweight :	25kD
Background :	The protein encoded by this gene belongs to the sperm-coating protein family of epididymal origin. This protein and its canine homolog are the first known examples of proteins with four tandemly arranged fibronectin type 2 (Fn2)

domains in the Fn2-module protein family. [provided by RefSeq, Jul 2008],

Function : function: Binds to spermatozoa upon ejaculation and may play a role in sperm capacitation. Has phosphorylcholine-binding activity., PTM: N-glycosylated., similarity: Belongs to the seminal plasma protein family., similarity: Contains 4 fibronectin type-II domains., tissue specificity: Detected in cauda epididymidal fluid and on sperm membrane (at protein level),.

Subcellular Location : Secreted .

Expression : Detected in cauda epididymidal fluid and on sperm membrane (at protein level).

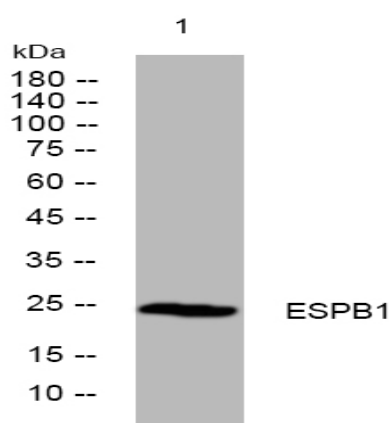
Sort : 5769

No4 : 1

Host : Rabbit

Modifications : Unmodified

Products Images



Western blot analysis of lysates from MCF-7 cells, primary antibody was diluted at 1:1000, 4° over night