

**CWC15 rabbit pAb**

<b>Catalog No :</b>	YT6485
<b>Reactivity :</b>	Human;Mouse;Rat
<b>Applications :</b>	WB
<b>Target :</b>	CWC15
<b>Fields :</b>	>>Spliceosome
<b>Gene Name :</b>	CWC15 C11orf5 AD-002 HSPC148
<b>Protein Name :</b>	CWC15
<b>Human Gene Id :</b>	51503
<b>Human Swiss Prot No :</b>	Q9P013
<b>Mouse Gene Id :</b>	66070
<b>Mouse Swiss Prot No :</b>	Q9JHS9
<b>Rat Gene Id :</b>	300361
<b>Rat Swiss Prot No :</b>	Q5BJP2
<b>Immunogen :</b>	Synthesized peptide derived from human CWC15 AA range: 33-83
<b>Specificity :</b>	This antibody detects endogenous levels of CWC15 at Human/Mouse/Rat
<b>Formulation :</b>	Liquid in PBS containing 50% glycerol, 0.5% BSA and 0.02% sodium azide.
<b>Source :</b>	Polyclonal, Rabbit,IgG
<b>Dilution :</b>	WB 1[?]500-2000
<b>Purification :</b>	The antibody was affinity-purified from rabbit antiserum by affinity-

chromatography using epitope-specific immunogen.

**Concentration :** 1 mg/ml

**Storage Stability :** -15°C to -25°C/1 year(Do not lower than -25°C)

**Molecularweight :** 25kD

**Function :** caution:Has been termed C11orf5 (PubMed:10873569), but is not the official C11orf5 as defined by HGNC.,function:Involved in pre-mRNA splicing.,similarity:Belongs to the CWC15 family.,

**Subcellular Location :** Nucleus .

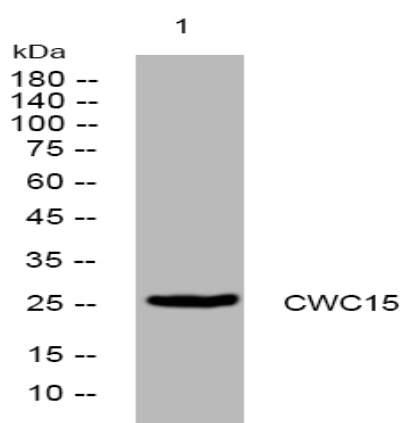
**Sort :** 4683

**No4 :** 1

**Host :** Rabbit

**Modifications :** Unmodified

## Products Images



Western blot analysis of lysates from PC-12 cells, primary antibody was diluted at 1:1000, 4° over night