

## Thrombospondin 1 Polyclonal Antibody

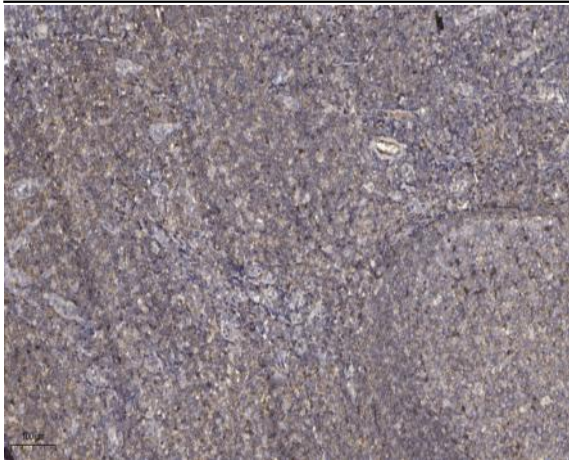
<b>Catalog No :</b>	YT6293
<b>Reactivity :</b>	Human;Mouse;Rat
<b>Applications :</b>	WB;IHC
<b>Target :</b>	Thrombospondin 1
<b>Fields :</b>	>>Rap1 signaling pathway;>>p53 signaling pathway;>>Phagosome;>>PI3K-Akt signaling pathway;>>TGF-beta signaling pathway;>>Focal adhesion;>>ECM-receptor interaction;>>Malaria;>>Human papillomavirus infection;>>Proteoglycans in cancer;>>MicroRNAs in cancer;>>Bladder cancer
<b>Gene Name :</b>	THBS1 TSP TSP1
<b>Protein Name :</b>	Thrombospondin 1
<b>Human Gene Id :</b>	7057
<b>Human Swiss Prot No :</b>	P07996
<b>Immunogen :</b>	Synthesized peptide derived from human Thrombospondin 1
<b>Specificity :</b>	This antibody detects endogenous levels of human Thrombospondin 1
<b>Formulation :</b>	Liquid in PBS containing 50% glycerol, 0.5% BSA and 0.02% sodium azide.
<b>Source :</b>	Polyclonal, Rabbit,IgG
<b>Dilution :</b>	WB 1:500-2000;IHC 1:50-300
<b>Purification :</b>	The antibody was affinity-purified from rabbit antiserum by affinity-chromatography using epitope-specific immunogen.
<b>Concentration :</b>	1 mg/ml
<b>Storage Stability :</b>	-15°C to -25°C/1 year(Do not lower than -25°C)

---

<b>Observed Band :</b>	130kD
<b>Background :</b>	thrombospondin 1 (THBS1) Homo sapiens The protein encoded by this gene is a subunit of a disulfide-linked homotrimeric protein. This protein is an adhesive glycoprotein that mediates cell-to-cell and cell-to-matrix interactions. This protein can bind to fibrinogen, fibronectin, laminin, type V collagen and integrins alpha-V/beta-1. This protein has been shown to play roles in platelet aggregation, angiogenesis, and tumorigenesis. [provided by RefSeq, Jul 2008],
<b>Function :</b>	function:Adhesive glycoprotein that mediates cell-to-cell and cell-to-matrix interactions. Can bind to fibrinogen, fibronectin, laminin, type V collagen and integrins alpha-V/beta-1, alpha-V/beta-3 and alpha-IIb/beta-3.,similarity:Belongs to the thrombospondin family.,similarity:Contains 1 TSP C-terminal (TSPC) domain.,similarity:Contains 1 TSP N-terminal (TSPN) domain.,similarity:Contains 1 VWFC domain.,similarity:Contains 3 EGF-like domains.,similarity:Contains 3 TSP type-1 domains.,similarity:Contains 8 TSP type-3 repeats.,subunit:Homotrimer; disulfide-linked.,
<b>Subcellular Location :</b>	Secreted . Cell surface . Secreted, extracellular space, extracellular matrix . Endoplasmic reticulum . Sarcoplasmic reticulum . Secreted by thrombin-activated platelets and binds to the cell surface in the presence of extracellular Ca(2+) (PubMed:6777381). Incorporated into the extracellular matrix of fibroblasts (PubMed:6341993). Also detected in the endoplasmic reticulum and sarcoplasmic reticulum where it plays a role in the ER stress response (By similarity) . .
<b>Expression :</b>	Aorta endothelial cell,Endothelial cell,Liver,Plasma,Platelet,Saliva,
<b>Tag :</b>	hot
<b>Sort :</b>	17109
<b>No4 :</b>	1
<b>Host :</b>	Rabbit
<b>Modifications :</b>	Unmodified

---

## Products Images



Immunohistochemical analysis of paraffin-embedded human tonsil. 1, Antibody was diluted at 1:200(4 ° overnight). 2, Tris-EDTA,pH9.0 was used for antigen retrieval. 3,Secondary antibody was diluted at 1:200(room temperature, 45min).