

## GNPI1 rabbit pAb

<b>Catalog No :</b>	YT6483
<b>Reactivity :</b>	Human;Mouse
<b>Applications :</b>	WB
<b>Target :</b>	GNPI1
<b>Fields :</b>	>>Amino sugar and nucleotide sugar metabolism;>>Metabolic pathways
<b>Gene Name :</b>	GNPDA1 GNPI HLN KIAA0060
<b>Protein Name :</b>	GNPI1
<b>Human Gene Id :</b>	10007
<b>Human Swiss Prot No :</b>	P46926
<b>Mouse Gene Id :</b>	26384
<b>Mouse Swiss Prot No :</b>	O88958
<b>Immunogen :</b>	Synthesized peptide derived from human GNPI1 AA range: 109-159
<b>Specificity :</b>	This antibody detects endogenous levels of GNPI1 at Human/Mouse
<b>Formulation :</b>	Liquid in PBS containing 50% glycerol, 0.5% BSA and 0.02% sodium azide.
<b>Source :</b>	Polyclonal, Rabbit,IgG
<b>Dilution :</b>	WB 1[?]500-2000
<b>Purification :</b>	The antibody was affinity-purified from rabbit antiserum by affinity-chromatography using epitope-specific immunogen.
<b>Concentration :</b>	1 mg/ml

**Storage Stability :** -15°C to -25°C/1 year(Do not lower than -25°C)

**Molecularweight :** 32kD

**Background :** Glucosamine-6-phosphate deaminase (EC 3.5.99.6) is an allosteric enzyme that catalyzes the reversible conversion of D-glucosamine-6-phosphate into D-fructose-6-phosphate and ammonium (Arreola et al., 2003 [PubMed 12965206]).[supplied by OMIM, Jan 2010],

**Function :** catalytic activity:D-glucosamine 6-phosphate + H(2)O = D-fructose 6-phosphate + NH(3).,function:Seems to trigger calcium oscillations in mammalian eggs. These oscillations serve as the essential trigger for egg activation and early development of the embryo.,similarity:Belongs to the glucosamine/galactosamine-6-phosphate isomerase family.,subunit:Homohexamer.,

**Subcellular Location :** Cytoplasm .

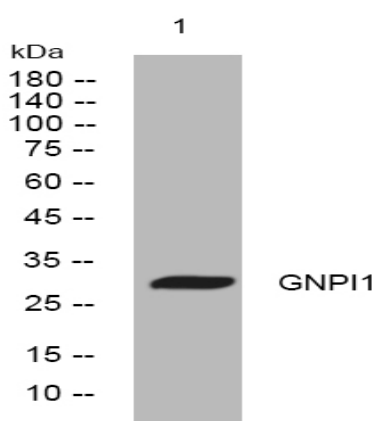
**Sort :** 6681

**No4 :** 1

**Host :** Rabbit

**Modifications :** Unmodified

## Products Images



Western blot analysis of lysates from U2OS cells, primary antibody was diluted at 1:1000, 4° over night