

LRC57 rabbit pAb

Catalog No :	YT6480
Reactivity :	Human;Mouse;Rat
Applications :	WB;IHC
Target :	LRC57
Gene Name :	LRRRC57
Protein Name :	LRC57
Human Gene Id :	255252
Human Swiss Prot No :	Q8N9N7
Mouse Swiss Prot No :	Q9D1G5
Rat Gene Id :	311346
Rat Swiss Prot No :	Q5FVI3
Immunogen :	Synthesized peptide derived from human LRC57 AA range: 87-137
Specificity :	This antibody detects endogenous levels of LRC57 at Human/Mouse/Rat
Formulation :	Liquid in PBS containing 50% glycerol, 0.5% BSA and 0.02% sodium azide.
Source :	Polyclonal, Rabbit,IgG
Dilution :	WB 1:500-2000;IHC 1:50-300
Purification :	The antibody was affinity-purified from rabbit antiserum by affinity-chromatography using epitope-specific immunogen.
Concentration :	1 mg/ml

Storage Stability : -15°C to -25°C/1 year(Do not lower than -25°C)

Molecularweight : 26kD

Function : similarity:Contains 7 LRR (leucine-rich) repeats.,

Subcellular Location : Membrane ; Lipid-anchor .

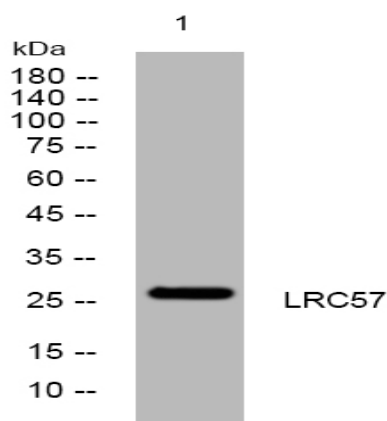
Sort : 9244

No4 : 1

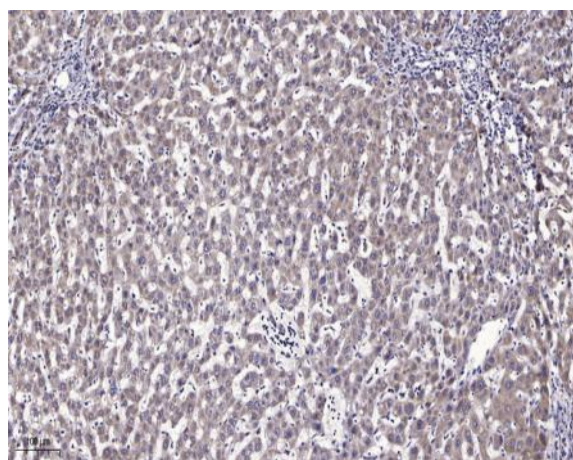
Host : Rabbit

Modifications : Unmodified

Products Images



Western blot analysis of lysates from DU145 cells, primary antibody was diluted at 1:1000, 4° over night



Immunohistochemical analysis of paraffin-embedded human liver cancer. 1, Antibody was diluted at 1:200(4° overnight). 2, Tris-EDTA,pH9.0 was used for antigen retrieval. 3,Secondary antibody was diluted at 1:200(room temperature, 45min).