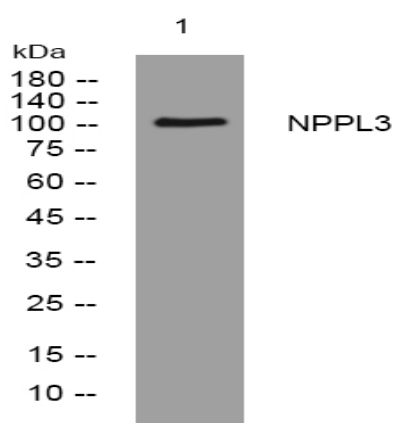


NPPL3 rabbit pAb

Catalog No :	YT6476
Reactivity :	Human
Applications :	WB
Target :	NPPL3
Gene Name :	NPIPL3 KIAA0220
Protein Name :	NPPL3
Human Gene Id :	23117
Human Swiss Prot No :	Q92617
Immunogen :	Synthesized peptide derived from human NPPL3 AA range: 831-881
Specificity :	This antibody detects endogenous levels of NPPL3 at Human
Formulation :	Liquid in PBS containing 50% glycerol, 0.5% BSA and 0.02% sodium azide.
Source :	Polyclonal, Rabbit,IgG
Dilution :	WB 1:500-2000
Purification :	The antibody was affinity-purified from rabbit antiserum by affinity-chromatography using epitope-specific immunogen.
Concentration :	1 mg/ml
Storage Stability :	-15°C to -25°C/1 year(Do not lower than -25°C)
Molecularweight :	116kD
Function :	caution:Could be the product of a pseudogene.,similarity:Belongs to the NPIP family.,

Subcellular Location :	Membrane ; Single-pass membrane protein .
Sort :	10950
No4 :	1
Host :	Rabbit
Modifications :	Unmodified

Products Images



Western blot analysis of lysates from AD293 cells, primary antibody was diluted at 1:1000, 4° over night