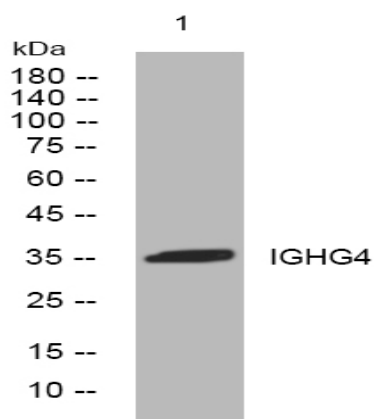


IGHG4 rabbit pAb

Catalog No :	YT6471
Reactivity :	Human
Applications :	WB
Target :	IGHG4
Gene Name :	IGHG4
Protein Name :	IGHG4
Human Swiss Prot No :	P01861
Immunogen :	Synthesized peptide derived from human IGHG4 AA range: 178-228
Specificity :	This antibody detects endogenous levels of IGHG4 at Human
Formulation :	Liquid in PBS containing 50% glycerol, 0.5% BSA and 0.02% sodium azide.
Source :	Polyclonal, Rabbit,IgG
Dilution :	WB 1:500-2000
Purification :	The antibody was affinity-purified from rabbit antiserum by affinity-chromatography using epitope-specific immunogen.
Concentration :	1 mg/ml
Storage Stability :	-15°C to -25°C/1 year(Do not lower than -25°C)
Molecularweight :	36kD
Subcellular Location :	Secreted . Cell membrane .
Sort :	8373

No4 :	<u>1</u>
Host :	<u>Rabbit</u>
Modifications :	<u>Unmodified</u>

Products Images



Western blot analysis of lysates from KB cells, primary antibody was diluted at 1:1000, 4° over night