

HPLN3 rabbit pAb

Catalog No :	YT6469
Reactivity :	Human;Mouse
Applications :	WB
Target :	HPLN3
Gene Name :	HAPLN3 EXLD1 UNQ238/PRO271
Protein Name :	HPLN3
Human Gene Id :	145864
Human Swiss Prot No :	Q96S86
Mouse Gene Id :	67666
Mouse Swiss Prot No :	Q80WM5
Immunogen :	Synthesized peptide derived from human HPLN3 AA range: 87-137
Specificity :	This antibody detects endogenous levels of HPLN3 at Human/Mouse
Formulation :	Liquid in PBS containing 50% glycerol, 0.5% BSA and 0.02% sodium azide.
Source :	Polyclonal, Rabbit,IgG
Dilution :	WB 1:500-2000
Purification :	The antibody was affinity-purified from rabbit antiserum by affinity-chromatography using epitope-specific immunogen.
Concentration :	1 mg/ml
Storage Stability :	-15°C to -25°C/1 year(Do not lower than -25°C)

Molecularweight : 40kD

Background : This gene belongs to the hyaluronan and proteoglycan binding link protein gene family. The protein encoded by this gene may function in hyaluronic acid binding and cell adhesion. [provided by RefSeq, Jul 2008],

Function : function:May function in hyaluronic acid binding.,similarity:Belongs to the HAPLN family.,similarity:Contains 1 Ig-like V-type (immunoglobulin-like) domain.,similarity:Contains 2 Link domains.,tissue specificity:Widely expressed with highest levels in spleen and placenta.,

Subcellular Location : Secreted, extracellular space, extracellular matrix .

Expression : Widely expressed with highest levels in spleen and placenta.

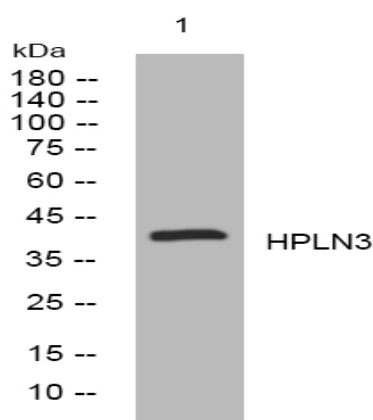
Sort : 7773

No4 : 1

Host : Rabbit

Modifications : Unmodified

Products Images



Western blot analysis of lysates from 293T cells, primary antibody was diluted at 1:1000, 4 ° over night