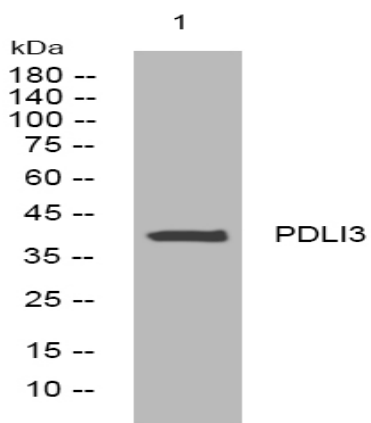


PDLI3 rabbit pAb

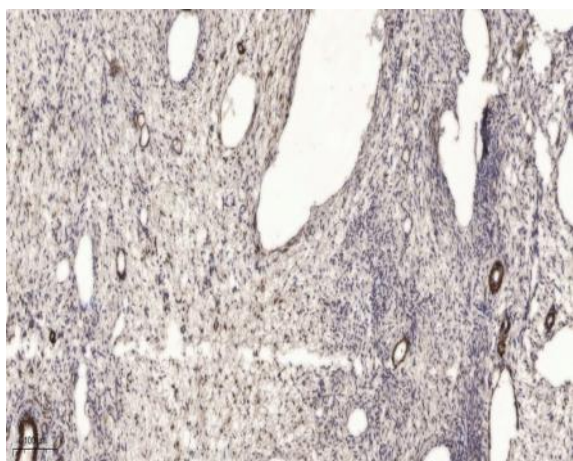
Catalog No :	YT6467
Reactivity :	Human;Mouse;Rat
Applications :	WB;IHC
Target :	PDLI3
Gene Name :	PDLIM3 ALP
Protein Name :	PDLI3
Human Gene Id :	27295
Human Swiss Prot No :	Q53GG5
Mouse Gene Id :	53318
Mouse Swiss Prot No :	O70209
Rat Gene Id :	114108
Rat Swiss Prot No :	Q66HS7
Immunogen :	Synthesized peptide derived from human PDLI3 AA range: 251-301
Specificity :	This antibody detects endogenous levels of PDLI3 at Human/Mouse/Rat
Formulation :	Liquid in PBS containing 50% glycerol, 0.5% BSA and 0.02% sodium azide.
Source :	Polyclonal, Rabbit,IgG
Dilution :	WB 1:500-2000;IHC 1:50-300
Purification :	The antibody was affinity-purified from rabbit antiserum by affinity-chromatography using epitope-specific immunogen.

Concentration :	1 mg/ml
Storage Stability :	-15°C to -25°C/1 year(Do not lower than -25°C)
Molecularweight :	40kD
Background :	<p>The protein encoded by this gene contains a PDZ domain and a LIM domain, indicating that it may be involved in cytoskeletal assembly. In support of this, the encoded protein has been shown to bind the spectrin-like repeats of alpha-actinin-2 and to colocalize with alpha-actinin-2 at the Z lines of skeletal muscle. Alternatively spliced transcript variants encoding multiple isoforms have been observed for this gene. Aberrant alternative splicing of this gene may play a role in myotonic dystrophy. [provided by RefSeq, Apr 2012],</p>
Function :	<p>disease:Quantitative or qualitative alterations of expression have not been detected in facioscapulohumeral muscular dystrophy (FSHD).,function:May play a role in the organization of actin filament arrays within muscle cells.,similarity:Contains 1 LIM zinc-binding domain.,similarity:Contains 1 PDZ (DHR) domain.,subcellular location:Localizes to myofiber Z-lines.,subunit:Interacts with ACTN2.,tissue specificity:Isoform 1 is highly expressed in differentiated skeletal muscle. Isoform 2 is heart-specific.,</p>
Subcellular Location :	Cytoplasm, myofibril, sarcomere, Z line . Localizes to myofiber Z-lines.
Expression :	Isoform 1 is highly expressed in differentiated skeletal muscle. Isoform 2 is heart-specific.
Tag :	hot
Sort :	11788
No4 :	1
Host :	Rabbit
Modifications :	Unmodified

Products Images



Western blot analysis of lysates from HEK293 cells, primary antibody was diluted at 1:1000, 4° over night



Immunohistochemical analysis of paraffin-embedded human oophoroma. 1, Antibody was diluted at 1:200(4° overnight). 2, Tris-EDTA,pH9.0 was used for antigen retrieval. 3,Secondary antibody was diluted at 1:200(room temperature, 45min).