

IGS21 rabbit pAb

Catalog No :	YT6465
Reactivity :	Human;Mouse
Applications :	WB
Target :	IGS21
Gene Name :	IGSF21
Protein Name :	IGS21
Human Gene Id :	84966
Human Swiss Prot No :	Q96ID5
Mouse Gene Id :	230868
Mouse Swiss Prot No :	Q7TNR6
Immunogen :	Synthesized peptide derived from human IGS21 AA range: 289-339
Specificity :	This antibody detects endogenous levels of IGS21 at Human/Mouse
Formulation :	Liquid in PBS containing 50% glycerol, 0.5% BSA and 0.02% sodium azide.
Source :	Polyclonal, Rabbit,IgG
Dilution :	WB 1:500-2000
Purification :	The antibody was affinity-purified from rabbit antiserum by affinity-chromatography using epitope-specific immunogen.
Concentration :	1 mg/ml
Storage Stability :	-15°C to -25°C/1 year(Do not lower than -25°C)

Molecularweight : 51kD

Background : This gene encodes a protein which has two immunoglobulin (Ig) domains and is a member of the immunoglobulin superfamily. Proteins in this superfamily are usually found on or in cell membranes and act as receptors in immune response pathways. [provided by RefSeq, Sep 2011],

Function : similarity:Contains 2 Ig-like (immunoglobulin-like) domains.,

Subcellular Location : Cell junction, synapse, postsynaptic cell membrane ; Lipid-anchor, GPI-anchor .

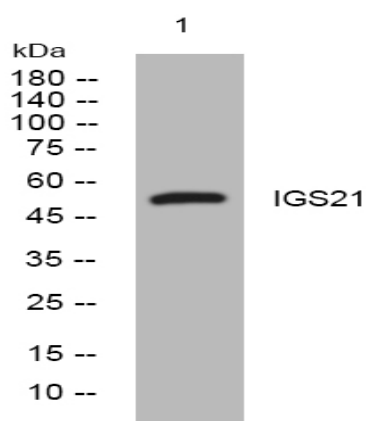
Sort : 8377

No4 : 1

Host : Rabbit

Modifications : Unmodified

Products Images



Western blot analysis of lysates from DU145 cells, primary antibody was diluted at 1:1000, 4° over night