

SALL2 rabbit pAb

Catalog No :	YT6463
Reactivity :	Human;Mouse
Applications :	WB
Target :	SALL2
Gene Name :	SALL2 KIAA0360 SAL2 ZNF795
Protein Name :	SALL2
Human Gene Id :	6297
Human Swiss Prot No :	Q9Y467
Mouse Gene Id :	50524
Mouse Swiss Prot No :	Q9QX96
Immunogen :	Synthesized peptide derived from human SALL2 AA range: 956-1006
Specificity :	This antibody detects endogenous levels of SALL2 at Human/Mouse
Formulation :	Liquid in PBS containing 50% glycerol, 0.5% BSA and 0.02% sodium azide.
Source :	Polyclonal, Rabbit,IgG
Dilution :	WB 1[?]500-2000
Purification :	The antibody was affinity-purified from rabbit antiserum by affinity-chromatography using epitope-specific immunogen.
Concentration :	1 mg/ml
Storage Stability :	-15°C to -25°C/1 year(Do not lower than -25°C)

Molecularweight : 111kD

Background : This gene encodes a protein containing multiple zinc finger domains. The encoded protein functions in optical fissure closure during development of the eye in the embryo. Mutations in this gene are associated with ocular coloboma. [provided by RefSeq, Jul 2016],

Function : developmental stage:In fetal brain exclusively in pontine nuclei.,function:Probable transcription factor.,similarity:Belongs to the sal C2H2-type zinc-finger protein family.,similarity:Contains 7 C2H2-type zinc fingers.,tissue specificity:Highest levels in adult brain (in different areas). Lower levels in heart; very low levels in kidney and pancreas.,

Subcellular Location : Nucleus .

Expression : Highest levels in adult brain (in different areas). Lower levels in heart; very low levels in kidney and pancreas. Expressed throughout the retina and lens vesicle as well as the periocular mesenchyme.

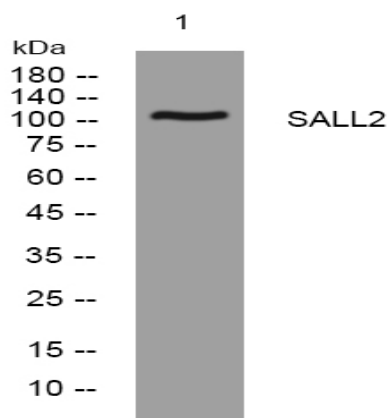
Sort : 14747

No4 : 1

Host : Rabbit

Modifications : Unmodified

Products Images



Western blot analysis of lysates from HpeG2 cells, primary antibody was diluted at 1:1000, 4° over night