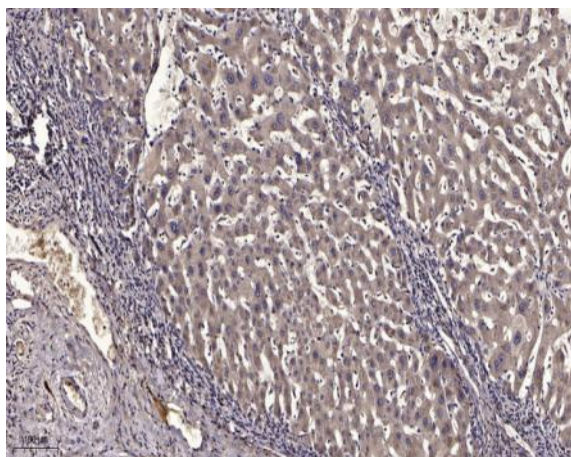


CG059 rabbit pAb

Catalog No :	YT6462
Reactivity :	Human;Mouse
Applications :	IHC;IF
Target :	CG059
Fields :	>>mTOR signaling pathway
Gene Name :	C7orf59
Protein Name :	CG059
Human Gene Id :	389541
Human Swiss Prot No :	Q0VGL1
Immunogen :	Synthesized peptide derived from human CG059 AA range: 8-58
Specificity :	This antibody detects endogenous levels of CG059 at Human
Formulation :	Liquid in PBS containing 50% glycerol, 0.5% BSA and 0.02% sodium azide.
Source :	Polyclonal, Rabbit,IgG
Dilution :	IHC 1:50-200. IF 1:50-200
Purification :	The antibody was affinity-purified from rabbit antiserum by affinity-chromatography using epitope-specific immunogen.
Concentration :	1 mg/ml
Storage Stability :	-15°C to -25°C/1 year(Do not lower than -25°C)
Molecularweight :	11kD

Function :	<u>similarity:Belongs to the UPF0539 family.,</u>
Subcellular Location :	<u>Lysosome .</u>
Sort :	<u>3909</u>
No4 :	<u>1</u>
Host :	<u>Rabbit</u>
Modifications :	<u>Unmodified</u>

Products Images



Immunohistochemical analysis of paraffin-embedded human liver cancer. 1, Antibody was diluted at 1:200(4° overnight). 2, Tris-EDTA,pH9.0 was used for antigen retrieval. 3,Secondary antibody was diluted at 1:200(room temperature, 45min).