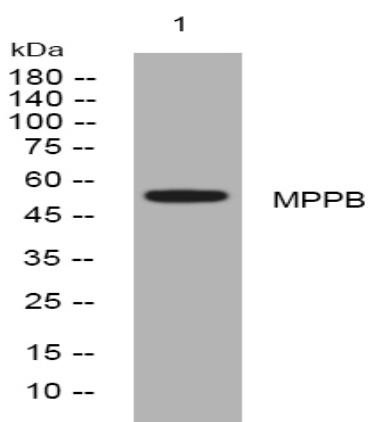


MPPB rabbit pAb

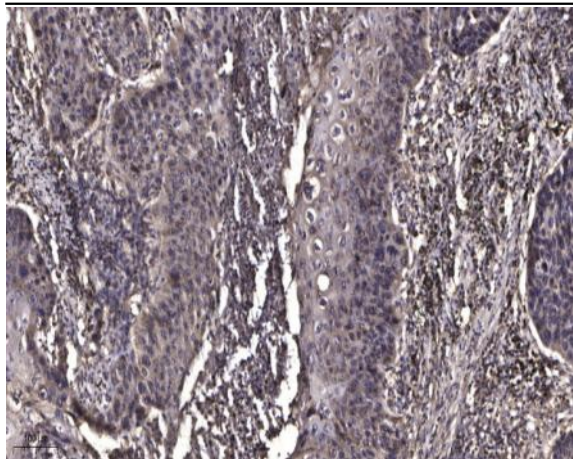
Catalog No :	YT6459
Reactivity :	Human;Mouse;Rat
Applications :	WB;IHC
Target :	MPPB
Gene Name :	PMPCB MPPB
Protein Name :	MPPB
Human Gene Id :	9512
Human Swiss Prot No :	O75439
Mouse Gene Id :	73078
Mouse Swiss Prot No :	Q9CXT8
Rat Gene Id :	64198
Rat Swiss Prot No :	Q03346
Immunogen :	Synthesized peptide derived from human MPPB AA range: 92-142
Specificity :	This antibody detects endogenous levels of MPPB at Human/Mouse/Rat
Formulation :	Liquid in PBS containing 50% glycerol, 0.5% BSA and 0.02% sodium azide.
Source :	Polyclonal, Rabbit,IgG
Dilution :	WB 1:500-2000;IHC 1:50-300
Purification :	The antibody was affinity-purified from rabbit antiserum by affinity-chromatography using epitope-specific immunogen.

Concentration :	1 mg/ml
Storage Stability :	-15°C to -25°C/1 year(Do not lower than -25°C)
Molecularweight :	54kD
Background :	This gene is a member of the peptidase M16 family and encodes a protein with a zinc-binding motif. This protein is located in the mitochondrial matrix and catalyzes the cleavage of the leader peptides of precursor proteins newly imported into the mitochondria, though it only functions as part of a heterodimeric complex. [provided by RefSeq, Jul 2008],
Function :	catalytic activity:Release of N-terminal transit peptides from precursor proteins imported into the mitochondrion, typically with Arg in position P2.,cofactor:Binds 1 zinc ion per subunit.,function:Cleaves presequences (transit peptides) from mitochondrial protein precursors.,similarity:Belongs to the peptidase M16 family.,subunit:Heterodimer of alpha and beta subunits.,
Subcellular Location :	Mitochondrion matrix .
Sort :	10196
No4 :	1
Host :	Rabbit
Modifications :	Unmodified

Products Images



Western blot analysis of lysates from 293T cells, primary antibody was diluted at 1:1000, 4° over night



Immunohistochemical analysis of paraffin-embedded human Squamous cell carcinoma of lung. 1, Antibody was diluted at 1:200(4° overnight). 2, Tris-EDTA,pH9.0 was used for antigen retrieval. 3,Secondary antibody was diluted at 1:200(room temperature, 45min).