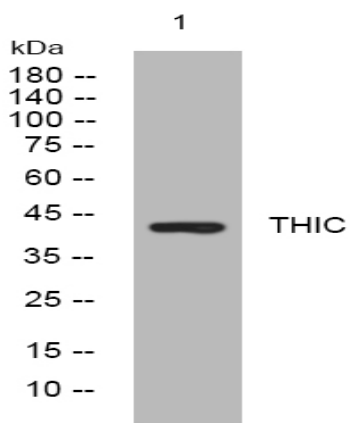


THIC rabbit pAb

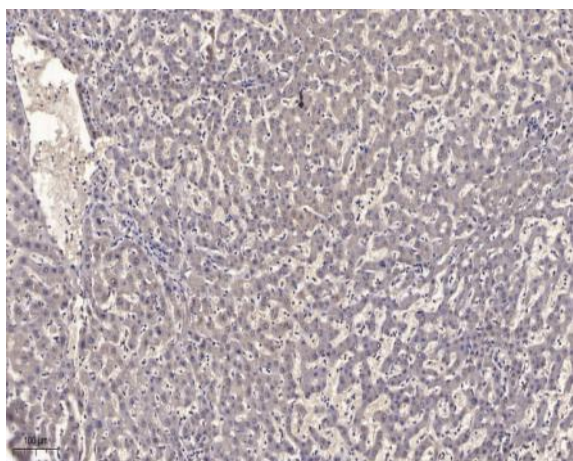
Catalog No :	YT6458
Reactivity :	Human;Mouse;Rat
Applications :	WB;ELISA;IHC
Target :	THIC
Fields :	>>Fatty acid degradation;>>Valine, leucine and isoleucine degradation;>>Lysine degradation;>>Tryptophan metabolism;>>Pyruvate metabolism;>>Glyoxylate and dicarboxylate metabolism;>>Butanoate metabolism;>>Terpenoid backbone biosynthesis;>>Metabolic pathways;>>Carbon metabolism;>>Fatty acid metabolism;>>Fat digestion and absorption
Gene Name :	ACAT2 ACTL
Protein Name :	THIC
Human Gene Id :	39
Human Swiss Prot No :	Q9BWD1
Mouse Gene Id :	110460
Mouse Swiss Prot No :	Q8CAY6
Rat Gene Id :	308100
Rat Swiss Prot No :	Q5XI22
Immunogen :	Synthesized peptide derived from human THIC AA range: 320-370
Specificity :	This antibody detects endogenous levels of THIC at Human/Mouse/Rat
Formulation :	Liquid in PBS containing 50% glycerol, 0.5% BSA and 0.02% sodium azide.
Source :	Polyclonal, Rabbit,IgG

Dilution :	WB 1:500-2000;IHC 1:50-300; ELISA 2000-20000
Purification :	The antibody was affinity-purified from rabbit antiserum by affinity-chromatography using epitope-specific immunogen.
Concentration :	1 mg/ml
Storage Stability :	-15°C to -25°C/1 year(Do not lower than -25°C)
Molecularweight :	44kD
Background :	The product of this gene is an enzyme involved in lipid metabolism, and it encodes cytosolic acetoacetyl-CoA thiolase. This gene shows complementary overlapping with the 3-prime region of the TCP1 gene in both mouse and human. These genes are encoded on opposite strands of DNA, as well as in opposite transcriptional orientation. Alternatively spliced transcript variants encoding different isoforms have been found for this gene. [provided by RefSeq, Dec 2014],
Function :	catalytic activity:2 acetyl-CoA = CoA + acetoacetyl-CoA.,similarity:Belongs to the thiolase family.,subunit:Homotetramer.,
Subcellular Location :	Cytoplasm, cytosol .
Sort :	17101
No4 :	1
Host :	Rabbit
Modifications :	Unmodified

Products Images



Western blot analysis of lysates from KB cells, primary antibody was diluted at 1:1000, 4° over night



Immunohistochemical analysis of paraffin-embedded human liver cancer. 1, Antibody was diluted at 1:200(4° overnight). 2, Tris-EDTA,pH9.0 was used for antigen retrieval. 3,Secondary antibody was diluted at 1:200(room temperature, 45min).