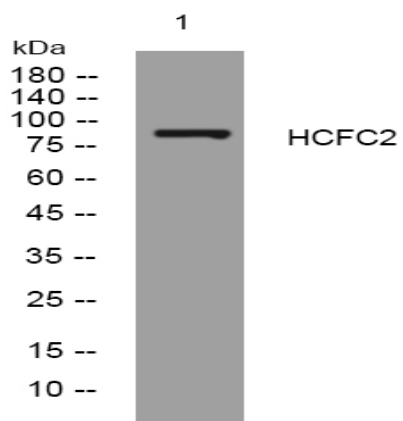


HCFC2 rabbit pAb

Catalog No :	YT6455
Reactivity :	Human;Mouse;Rat
Applications :	WB
Target :	HCFC2
Fields :	>>Herpes simplex virus 1 infection
Gene Name :	HCFC2
Protein Name :	HCFC2
Human Gene Id :	29915
Human Swiss Prot No :	Q9Y5Z7
Mouse Swiss Prot No :	Q9D968
Rat Gene Id :	314704
Rat Swiss Prot No :	Q5RKG2
Immunogen :	Synthesized peptide derived from human HCFC2 AA range: 347-397
Specificity :	This antibody detects endogenous levels of HCFC2 at Human/Mouse/Rat
Formulation :	Liquid in PBS containing 50% glycerol, 0.5% BSA and 0.02% sodium azide.
Source :	Polyclonal, Rabbit,IgG
Dilution :	WB 1:500-2000
Purification :	The antibody was affinity-purified from rabbit antiserum by affinity-chromatography using epitope-specific immunogen.

Concentration :	1 mg/ml
Storage Stability :	-15°C to -25°C/1 year(Do not lower than -25°C)
Molecularweight :	87kD
Background :	This gene encodes one of two proteins which interact with VP16, a herpes simplex virus protein that initiates virus infection. Both the encoded protein and the original Herpes host cell factor interact with VP16 through a beta-propeller domain. The original Herpes host cell factor, however, is effective at initiating viral infection while the encoded protein is not. Transcripts of varying length due to alternative polyadenylation signals have been described. [provided by RefSeq, Jul 2008],
Function :	similarity:Contains 3 fibronectin type-III domains.,similarity:Contains 4 Kelch repeats.,subunit:Binds MLL. Component of the MLL complex, at least composed of MLL, ASH2L, RBBP5, DPY30, WDR5, MEN1, HCFC1 and HCFC2.,tissue specificity:Highly expressed in testis. Detected at lower levels in spleen, thymus, prostate, ovary, small intestine and colon.,
Subcellular Location :	Cytoplasm . Nucleus .
Expression :	Highly expressed in testis. Detected at lower levels in spleen, thymus, prostate, ovary, small intestine and colon.
Sort :	7263
No4 :	1
Host :	Rabbit
Modifications :	Unmodified

Products Images



Western blot analysis of lysates from K562 cells, primary antibody was diluted at 1:1000, 4° over night