

KBTBA rabbit pAb

Catalog No :	YT6454
Reactivity :	Human;Rat
Applications :	WB;IHC
Target :	KBTBA
Gene Name :	KBTBD10 KRP1
Protein Name :	KBTBA
Human Gene Id :	10324
Human Swiss Prot No :	O60662
Rat Gene Id :	117537
Rat Swiss Prot No :	Q9ER30
Immunogen :	Synthesized peptide derived from human KBTBA AA range: 268-318
Specificity :	This antibody detects endogenous levels of KBTBA at Human/Rat
Formulation :	Liquid in PBS containing 50% glycerol, 0.5% BSA and 0.02% sodium azide.
Source :	Polyclonal, Rabbit,IgG
Dilution :	WB 1:500-2000;IHC 1:50-300
Purification :	The antibody was affinity-purified from rabbit antiserum by affinity-chromatography using epitope-specific immunogen.
Concentration :	1 mg/ml
Storage Stability :	-15°C to -25°C/1 year(Do not lower than -25°C)

Molecularweight : 67kD

Background : This gene is a member of the kelch-like family. The encoded protein contains a BACK domain, a BTB/POZ domain, and 5 Kelch repeats. This protein is thought to function in skeletal muscle development and maintenance. Mutations in this gene have been associated with nemaline myopathy (NM), a rare congenital muscle disorder. [provided by RefSeq, Mar 2015],

Function : function:Required for pseudopod elongation in transformed cells. Substrate-specific adapter of an E3 ubiquitin-protein ligase complex which mediates the ubiquitination and subsequent proteasomal degradation of target proteins.,pathway:Protein modification; protein ubiquitination.,PTM:Ubiquitinated and probably targeted for proteasome-independent degradation.,similarity:Contains 1 BTB (POZ) domain.,similarity:Contains 5 Kelch repeats.,subcellular location:Predominantly cytoplasmic but can co-localize with F-actin at the membrane ruffle-like structures at the tips of transformation-specific pseudopodia.,subunit:Interacts with NRAP (By similarity). Part of a complex that contains CUL3, RBX1 and KBTBD10.,tissue specificity:Sarcomeric muscle.,

Subcellular Location : Cytoplasm . Cytoplasm, cytoskeleton . Cell projection, pseudopodium . Cell projection, ruffle . Cytoplasm, myofibril, sarcomere, M line . Sarcoplasmic reticulum membrane . Endoplasmic reticulum membrane . Predominantly cytoplasmic but can colocalize with F-actin at the membrane ruffle-like structures at the tips of transformation-specific pseudopodia. .

Expression : Sarcomeric muscle.

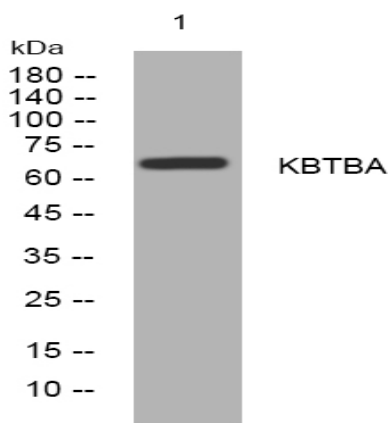
Sort : 8845

No4 : 1

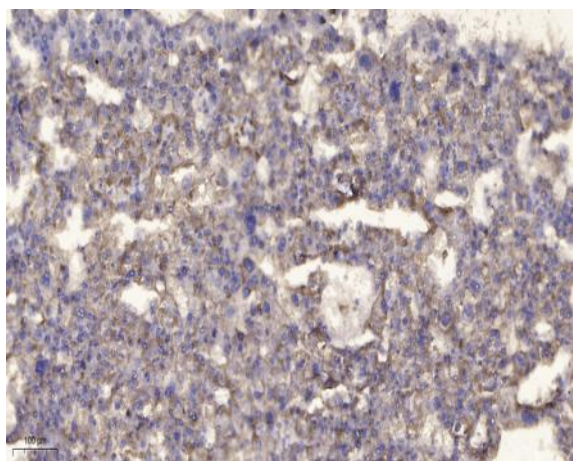
Host : Rabbit

Modifications : Unmodified

Products Images



Western blot analysis of lysates from HCT116 cells, primary antibody was diluted at 1:1000, 4° over night



Immunohistochemical analysis of paraffin-embedded human liver cancer. 1, Antibody was diluted at 1:200(4° overnight). 2, Tris-EDTA,pH9.0 was used for antigen retrieval. 3,Secondary antibody was diluted at 1:200(room temperature, 45min).