

## FA54A rabbit pAb

|                              |   |
|------------------------------|---|
| <b>Catalog No :</b>          | YT6451  |
| <b>Reactivity :</b>          | Human;Mouse;Rat   |
| <b>Applications :</b>        | WB  |
| <b>Target :</b>              | FA54A   |
| <b>Gene Name :</b>           | FAM54A DUFD1  |
| <b>Protein Name :</b>        | FA54A   |
| <b>Human Gene Id :</b>       | 113115  |
| <b>Human Swiss Prot No :</b> | Q6P444  |
| <b>Mouse Gene Id :</b>       | 71804   |
| <b>Mouse Swiss Prot No :</b> | Q8VED8  |
| <b>Rat Swiss Prot No :</b>   | B0K035  |
| <b>Immunogen :</b>           | Synthesized peptide derived from human FA54A AA range: 303-353  |
| <b>Specificity :</b>         | This antibody detects endogenous levels of FA54A at Human/Mouse/Rat   |
| <b>Formulation :</b>         | Liquid in PBS containing 50% glycerol, 0.5% BSA and 0.02% sodium azide.   |
| <b>Source :</b>              | Polyclonal, Rabbit,IgG  |
| <b>Dilution :</b>            | WB 1:500-2000   |
| <b>Purification :</b>        | The antibody was affinity-purified from rabbit antiserum by affinity-chromatography using epitope-specific immunogen. |
| <b>Concentration :</b>       | 1 mg/ml   |

**Storage Stability :** -15°C to -25°C/1 year(Do not lower than -25°C)

**Molecularweight :** 42kD

**Function :** similarity:Belongs to the MTFR1/FAM54 family.,

**Subcellular Location :** Mitochondrion . Associated with membranes. .

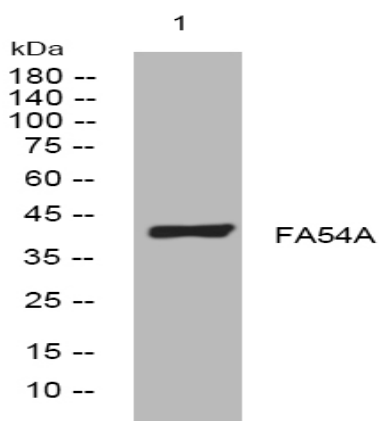
**Sort :** 5858

**No4 :** 1

**Host :** Rabbit

**Modifications :** Unmodified

## Products Images



Western blot analysis of lysates from HpeG2 cells, primary antibody was diluted at 1:1000, 4° over night