

AMOL2 rabbit pAb

Catalog No :	YT6450
Reactivity :	Human;Mouse;Rat
Applications :	WB
Target :	AMOL2
Fields :	>>Tight junction
Gene Name :	AMOTL2 KIAA0989
Protein Name :	AMOL2
Human Gene Id :	51421
Human Swiss Prot No :	Q9Y2J4
Mouse Gene Id :	56332
Mouse Swiss Prot No :	Q8K371
Rat Gene Id :	65157
Rat Swiss Prot No :	G3V735
Immunogen :	Synthesized peptide derived from human AMOL2 AA range: 201-251
Specificity :	This antibody detects endogenous levels of AMOL2 at Human/Mouse/Rat
Formulation :	Liquid in PBS containing 50% glycerol, 0.5% BSA and 0.02% sodium azide.
Source :	Polyclonal, Rabbit,IgG
Dilution :	WB 1[?]500-2000
Purification :	The antibody was affinity-purified from rabbit antiserum by affinity-

chromatography using epitope-specific immunogen.

Concentration : 1 mg/ml

Storage Stability : -15°C to -25°C/1 year(Do not lower than -25°C)

Molecularweight : 86kD

Background : Angiotonin is a protein that binds angiotonin, a circulating inhibitor of the formation of new blood vessels (angiogenesis). Angiotonin mediates angiotonin inhibition of endothelial cell migration and tube formation in vitro. The protein encoded by this gene is related to angiotonin and is a member of the motin protein family. Alternative splicing results in multiple transcript variants of this gene. [provided by RefSeq, Jul 2013],

Function : similarity:Belongs to the angiotonin family.,

Subcellular Location : Recycling endosome .

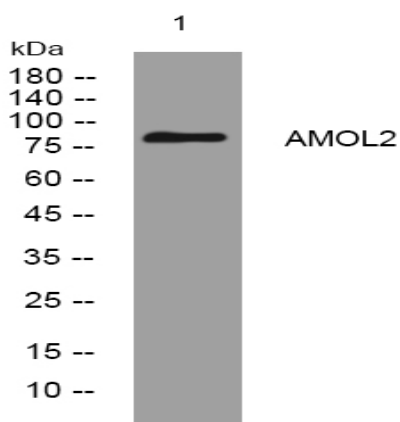
Sort : 1950

No4 : 1

Host : Rabbit

Modifications : Unmodified

Products Images



Western blot analysis of lysates from KB cells, primary antibody was diluted at 1:1000, 4° over night