

SSRD rabbit pAb

Catalog No :	YT6449
Reactivity :	Human;Mouse;Rat
Applications :	WB
Target :	SSRD
Fields :	>>Protein processing in endoplasmic reticulum
Gene Name :	SSR4 TRAPD
Protein Name :	SSRD
Human Gene Id :	6748
Human Swiss Prot No :	P51571
Mouse Gene Id :	20832
Mouse Swiss Prot No :	Q62186
Rat Gene Id :	29435
Rat Swiss Prot No :	Q07984
Immunogen :	Synthesized peptide derived from human SSRD AA range: 27-77
Specificity :	This antibody detects endogenous levels of SSRD at Human/Mouse/Rat
Formulation :	Liquid in PBS containing 50% glycerol, 0.5% BSA and 0.02% sodium azide.
Source :	Polyclonal, Rabbit,IgG
Dilution :	WB 1[?]500-2000
Purification :	The antibody was affinity-purified from rabbit antiserum by affinity-

chromatography using epitope-specific immunogen.

Concentration : 1 mg/ml

Storage Stability : -15°C to -25°C/1 year(Do not lower than -25°C)

Molecularweight : 19kD

Background : This gene encodes the delta subunit of the translocon-associated protein complex which is involved in translocating proteins across the endoplasmic reticulum membrane. The encoded protein is located in the Xq28 region and is arranged in a compact head-to-head manner with the isocitrate dehydrogenase 3 (NAD⁺) gamma gene and both genes are driven by a CpG-embedded bidirectional promoter. Alternate splicing results in multiple transcript variants.[provided by RefSeq, Mar 2011],

Function : function:TRAP proteins are part of a complex whose function is to bind calcium to the ER membrane and thereby regulate the retention of ER resident proteins.,similarity:Belongs to the TRAP-delta family.,subunit:Heterotetramer of TRAP-alpha, TRAP-beta, TRAP-delta and TRAP-gamma.,

Subcellular Location : Endoplasmic reticulum membrane; Single-pass type I membrane protein.

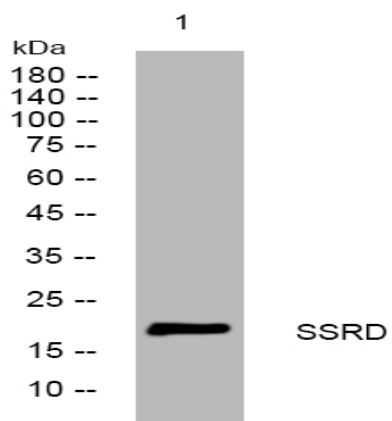
Sort : 16638

No4 : 1

Host : Rabbit

Modifications : Unmodified

Products Images



Western blot analysis of lysates from K562 cells, primary antibody was diluted at 1:1000, 4° over night