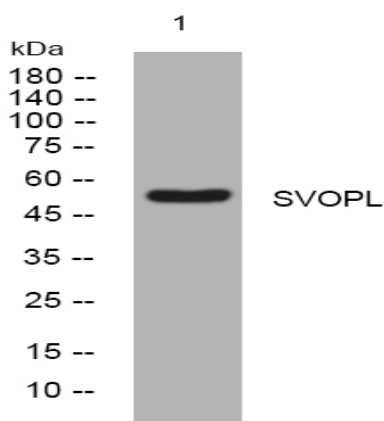


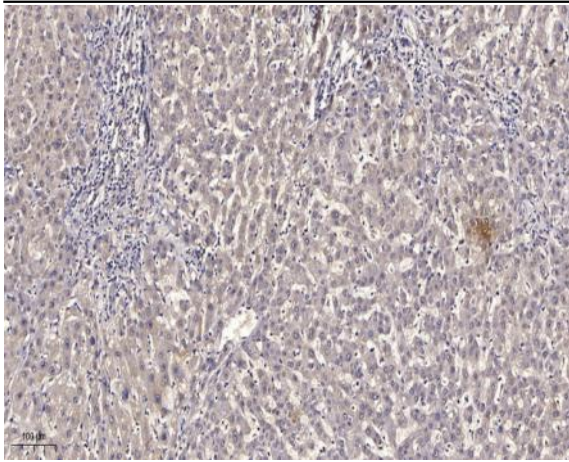
SVOPL rabbit pAb

Catalog No :	YT6442
Reactivity :	Human;Mouse
Applications :	WB;IHC
Target :	SVOPL
Gene Name :	SVOPL
Protein Name :	SVOPL
Human Gene Id :	136306
Human Swiss Prot No :	Q8N434
Mouse Gene Id :	320590
Mouse Swiss Prot No :	Q6PDF3
Immunogen :	Synthesized peptide derived from human SVOPL AA range: 118-168
Specificity :	This antibody detects endogenous levels of SVOPL at Human/Mouse
Formulation :	Liquid in PBS containing 50% glycerol, 0.5% BSA and 0.02% sodium azide.
Source :	Polyclonal, Rabbit,IgG
Dilution :	WB 1:500-2000;IHC 1:50-300
Purification :	The antibody was affinity-purified from rabbit antiserum by affinity-chromatography using epitope-specific immunogen.
Concentration :	1 mg/ml
Storage Stability :	-15°C to -25°C/1 year(Do not lower than -25°C)

Molecularweight : 54kD**Background :** The protein encoded by this gene is thought to be a member of solute carrier family 22, which includes transmembrane proteins that transport toxins and drugs from the body. This gene is a paralog of the SVOP gene that encodes synaptic vesicle 2-related protein. [provided by RefSeq, Sep 2016],**Function :** similarity:Belongs to the major facilitator superfamily.,**Subcellular Location :** Membrane ; Multi-pass membrane protein .**Sort :** 16781**No4 :** 1**Host :** Rabbit**Modifications :** Unmodified

Products Images





Immunohistochemical analysis of paraffin-embedded human liver cancer. 1, Antibody was diluted at 1:200(4° overnight). 2, Tris-EDTA,pH9.0 was used for antigen retrieval. 3,Secondary antibody was diluted at 1:200(room temperature, 45min).