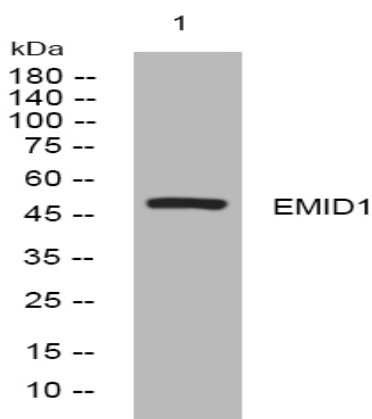


EMID1 rabbit pAb

Catalog No :	YT6441
Reactivity :	Human;Mouse
Applications :	WB
Target :	EMID1
Gene Name :	EMID1 EMU1
Protein Name :	EMID1
Human Gene Id :	129080
Human Swiss Prot No :	Q96A84
Mouse Gene Id :	140703
Mouse Swiss Prot No :	Q91VF5
Immunogen :	Synthesized peptide derived from human EMID1 AA range: 318-368
Specificity :	This antibody detects endogenous levels of EMID1 at Human/Mouse
Formulation :	Liquid in PBS containing 50% glycerol, 0.5% BSA and 0.02% sodium azide.
Source :	Polyclonal, Rabbit,IgG
Dilution :	WB 1:500-2000
Purification :	The antibody was affinity-purified from rabbit antiserum by affinity-chromatography using epitope-specific immunogen.
Concentration :	1 mg/ml
Storage Stability :	-15°C to -25°C/1 year(Do not lower than -25°C)

Molecularweight : 49kD**Function :** similarity:Contains 1 collagen-like domain.,similarity:Contains 1 EMI domain.,subunit:Homo- or heteromers.,**Subcellular Location :** Secreted, extracellular space, extracellular matrix.**Sort :** 5530**No4 :** 1**Host :** Rabbit**Modifications :** Unmodified

Products Images



Western blot analysis of lysates from HpeG2 cells, primary antibody was diluted at 1:1000, 4° over night