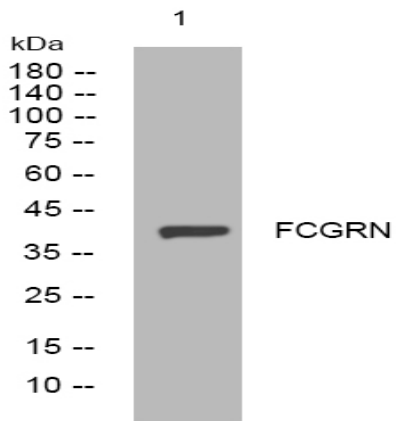


FCGRN rabbit pAb

Catalog No :	YT6440
Reactivity :	Human;Mouse;Rat
Applications :	WB
Target :	FCGRN
Gene Name :	FCGRT FCRN
Protein Name :	FCGRN
Human Gene Id :	2217
Human Swiss Prot No :	P55899
Mouse Gene Id :	14132
Mouse Swiss Prot No :	Q61559
Rat Gene Id :	29558
Rat Swiss Prot No :	P13599
Immunogen :	Synthesized peptide derived from human FCGRN AA range: 146-196
Specificity :	This antibody detects endogenous levels of FCGRN at Human/Mouse/Rat
Formulation :	Liquid in PBS containing 50% glycerol, 0.5% BSA and 0.02% sodium azide.
Source :	Polyclonal, Rabbit,IgG
Dilution :	WB 1:500-2000
Purification :	The antibody was affinity-purified from rabbit antiserum by affinity-chromatography using epitope-specific immunogen.

Concentration :	1 mg/ml
Storage Stability :	-15°C to -25°C/1 year(Do not lower than -25°C)
Molecularweight :	40kD
Background :	This gene encodes a receptor that binds the Fc region of monomeric immunoglobulin G. The encoded protein transfers immunoglobulin G antibodies from mother to fetus across the placenta. This protein also binds immunoglobulin G to protect the antibody from degradation. Alternative splicing results in multiple transcript variants. [provided by RefSeq, Apr 2009],
Function :	function: Binds to the Fc region of monomeric immunoglobulins gamma. Mediates the uptake of IgG from milk. Possible role in transfer of immunoglobulin G from mother to fetus., similarity: Belongs to the immunoglobulin superfamily., subunit: FcRn complex consist of two subunits: p51, and p14 which is equivalent to beta-2-microglobulin. It forms an MHC class I-like heterodimer.,
Subcellular Location :	Cell membrane ; Single-pass type I membrane protein . Endosome membrane .
Expression :	Expressed in full-term placenta, heart, lung, liver, muscle, kidney, pancreas, and both fetal and adult small intestine.
Sort :	5987
No4 :	1
Host :	Rabbit
Modifications :	Unmodified

Products Images



Western blot analysis of lysates from HeLa cells, primary antibody was diluted at 1:1000, 4° over night