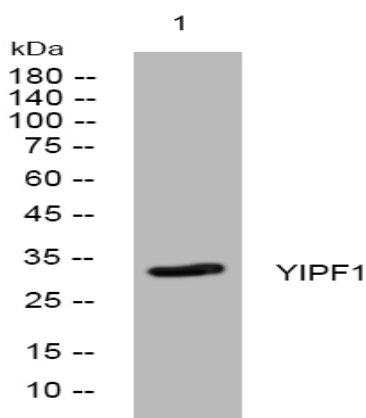


YIPF1 rabbit pAb

Catalog No :	YT6435
Reactivity :	Human;Mouse;Rat
Applications :	WB
Target :	YIPF1
Gene Name :	YIPF1
Protein Name :	YIPF1
Human Gene Id :	54432
Human Swiss Prot No :	Q9Y548
Mouse Gene Id :	230584
Mouse Swiss Prot No :	Q91VU1
Rat Gene Id :	298312
Rat Swiss Prot No :	Q6P6G5
Immunogen :	Synthesized peptide derived from human YIPF1 AA range: 223-273
Specificity :	This antibody detects endogenous levels of YIPF1 at Human/Mouse/Rat
Formulation :	Liquid in PBS containing 50% glycerol, 0.5% BSA and 0.02% sodium azide.
Source :	Polyclonal, Rabbit,IgG
Dilution :	WB 1:500-2000
Purification :	The antibody was affinity-purified from rabbit antiserum by affinity-chromatography using epitope-specific immunogen.

Concentration :	1 mg/ml
Storage Stability :	-15°C to -25°C/1 year(Do not lower than -25°C)
Molecularweight :	34kD
Function :	similarity:Belongs to the YIP1 family.,
Subcellular Location :	Golgi apparatus, cis-Golgi network membrane ; Multi-pass membrane protein . Golgi apparatus, trans-Golgi network membrane . Late endosome membrane . Mainly localizes within medial-/trans-Golgi and trans-Golgi network (TGN), while less so within cis-Golgi. .
Sort :	24396
No4 :	1
Host :	Rabbit
Modifications :	Unmodified

Products Images



Western blot analysis of lysates from HpeG2 cells, primary antibody was diluted at 1:1000, 4° over night