

SO1C1 rabbit pAb

Catalog No :	YT6434
Reactivity :	Human;Mouse;Rat
Applications :	WB;ELISA;IHC
Target :	SO1C1
Fields :	>>Thyroid hormone signaling pathway
Gene Name :	SLCO1C1 OATP14 OATP1C1 OATPF SLC21A14
Protein Name :	SO1C1
Human Gene Id :	53919
Human Swiss Prot No :	Q9NYB5
Mouse Gene Id :	58807
Mouse Swiss Prot No :	Q9ERB5
Rat Gene Id :	84511
Rat Swiss Prot No :	Q9EPZ7
Immunogen :	Synthesized peptide derived from human SO1C1 AA range: 634-684
Specificity :	This antibody detects endogenous levels of SO1C1 at Human/Mouse/Rat
Formulation :	Liquid in PBS containing 50% glycerol, 0.5% BSA and 0.02% sodium azide.
Source :	Polyclonal, Rabbit,IgG
Dilution :	WB 1:500-2000;IHC 1:50-300; ELISA 2000-20000
Purification :	The antibody was affinity-purified from rabbit antiserum by affinity-

chromatography using epitope-specific immunogen.

Concentration : 1 mg/ml

Storage Stability : -15°C to -25°C/1 year (Do not lower than -25°C)

Molecularweight : 78kD

Background : This gene encodes a member of the organic anion transporter family. The encoded protein is a transmembrane receptor that mediates the sodium-independent uptake of thyroid hormones in brain tissues. This protein has particularly high affinity for the thyroid hormones thyroxine, tri-iodothyronine and reverse tri-iodothyronine. Polymorphisms in the gene encoding this protein may be associated with fatigue and depression in patients suffering from hyperthyroidism. Alternative splicing results in multiple transcript variants. [provided by RefSeq, Mar 2009],

Function : function:Mediates the Na(+)-independent high affinity transport of organic anions such as the thyroid hormones thyroxine (T4) and rT3. Other potential substrates, such as triiodothyronine (T3), 17-beta-glucuronosyl estradiol, estrone-3-sulfate and sulfobromophthalein (BSP) are transported with much lower efficiency.,similarity:Belongs to the organo anion transporter (TC 2.A.60) family.,tissue specificity:Highly expressed in brain and in Leydig cells in testis. Detected in many brain regions with the exception of pons and cerebellum.,

Subcellular Location : Cell membrane ; Multi-pass membrane protein . Expressed in both luminal and abluminal membranes of brain capillary endothelial cells. Localized to the apical membrane and basal surfaces of choroid plexus (By similarity). .

Expression : Highly expressed in brain and in Leydig cells in testis. Detected in many brain regions with the exception of pons and cerebellum. Not strongly enriched in cerebral microvessels.

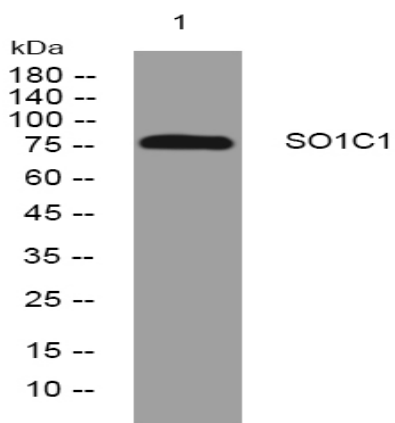
Sort : 16482

No4 : 1

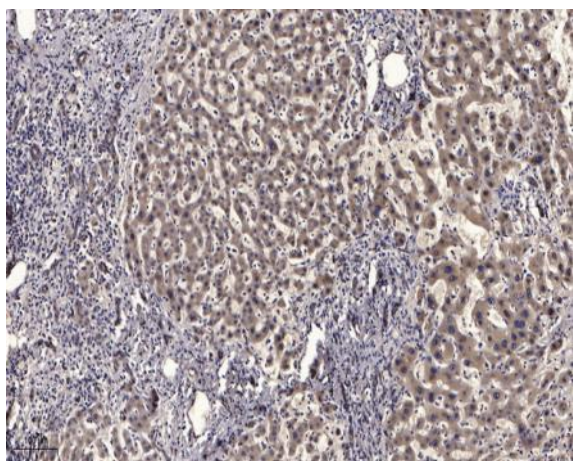
Host : Rabbit

Modifications : Unmodified

Products Images



Western blot analysis of lysates from HpeG2 cells, primary antibody was diluted at 1:1000, 4° over night



Immunohistochemical analysis of paraffin-embedded human liver cancer. 1, Antibody was diluted at 1:200(4° overnight). 2, Tris-EDTA,pH9.0 was used for antigen retrieval. 3,Secondary antibody was diluted at 1:200(room temperature, 45min).