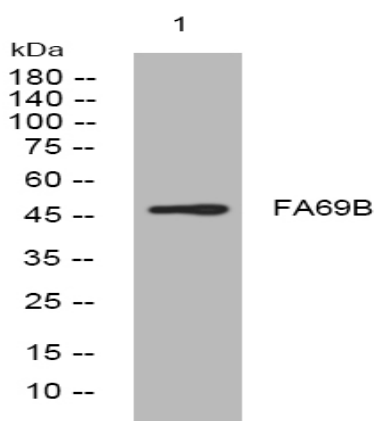


## FA69B rabbit pAb

<b>Catalog No :</b>	YT6431
<b>Reactivity :</b>	Human;Mouse;Rat
<b>Applications :</b>	WB
<b>Target :</b>	FA69B
<b>Gene Name :</b>	FAM69B C9orf136 PP6977
<b>Protein Name :</b>	FA69B
<b>Human Gene Id :</b>	138311
<b>Human Swiss Prot No :</b>	Q5VUD6
<b>Mouse Gene Id :</b>	56279
<b>Mouse Swiss Prot No :</b>	Q99ML4
<b>Rat Gene Id :</b>	362090
<b>Rat Swiss Prot No :</b>	Q5FVL3
<b>Immunogen :</b>	Synthesized peptide derived from human FA69B AA range: 333-383
<b>Specificity :</b>	This antibody detects endogenous levels of FA69B at Human/Mouse/Rat
<b>Formulation :</b>	Liquid in PBS containing 50% glycerol, 0.5% BSA and 0.02% sodium azide.
<b>Source :</b>	Polyclonal, Rabbit,IgG
<b>Dilution :</b>	WB 1:500-2000
<b>Purification :</b>	The antibody was affinity-purified from rabbit antiserum by affinity-chromatography using epitope-specific immunogen.

<b>Concentration :</b>	1 mg/ml
<b>Storage Stability :</b>	-15°C to -25°C/1 year(Do not lower than -25°C)
<b>Molecularweight :</b>	47kD
<b>Background :</b>	This gene encodes a member of the FAM69 family of cysteine-rich type II transmembrane proteins. These proteins localize to the endoplasmic reticulum but their specific functions are unknown. [provided by RefSeq, Nov 2011],
<b>Function :</b>	similarity:Belongs to the FAM69 family.,
<b>Subcellular Location :</b>	Endoplasmic reticulum membrane ; Single-pass type II membrane protein .
<b>Sort :</b>	5861
<b>No4 :</b>	1
<b>Host :</b>	Rabbit
<b>Modifications :</b>	Unmodified

## Products Images



Western blot analysis of lysates from VEC cells, primary antibody was diluted at 1:1000, 4° over night