

## STX8 rabbit pAb

<b>Catalog No :</b>	YT6429
<b>Reactivity :</b>	Human;Mouse;Rat
<b>Applications :</b>	WB;ELISA;IHC
<b>Target :</b>	STX8
<b>Fields :</b>	>>SNARE interactions in vesicular transport
<b>Gene Name :</b>	STX8
<b>Protein Name :</b>	STX8
<b>Human Gene Id :</b>	9482
<b>Human Swiss Prot No :</b>	Q9UNK0
<b>Mouse Gene Id :</b>	55943
<b>Mouse Swiss Prot No :</b>	O88983
<b>Rat Gene Id :</b>	59074
<b>Rat Swiss Prot No :</b>	Q9Z2Q7
<b>Immunogen :</b>	Synthesized peptide derived from human STX8 AA range: 42-92
<b>Specificity :</b>	This antibody detects endogenous levels of STX8 at Human/Mouse/Rat
<b>Formulation :</b>	Liquid in PBS containing 50% glycerol, 0.5% BSA and 0.02% sodium azide.
<b>Source :</b>	Polyclonal, Rabbit,IgG
<b>Dilution :</b>	WB 1:500-2000;IHC 1:50-300; ELISA 2000-20000
<b>Purification :</b>	The antibody was affinity-purified from rabbit antiserum by affinity-

---

chromatography using epitope-specific immunogen.

---

**Concentration :** 1 mg/ml

---

**Storage Stability :** -15°C to -25°C/1 year(Do not lower than -25°C)

---

**Molecularweight :** 26kD

---

**Background :** The gene is a member of the syntaxin family. The encoded protein is involved in protein trafficking from early to late endosomes via vesicle fusion and exocytosis. A related pseudogene has been identified on chromosome 12. Alternative splicing results in multiple transcript variants. [provided by RefSeq, May 2010],

---

**Function :** function:Vesicle trafficking protein that functions in the early secretory pathway, possibly by mediating retrograde transport from cis-Golgi membranes to the ER.,similarity:Belongs to the syntaxin family.,similarity:Contains 1 t-SNARE coiled-coil homology domain.,subcellular location:Preferentially associated with the early endosome. To lesser extends, also present in late endosome, the plasma membrane and coated pits.,subunit:Forms a SNARE complex with STX7, VTI1B and VAMP8 which functions in the homotypic fusion of late endosomes. Part of the SNARE core complex containing STX7, VAMP8 and VTI1B. Interacts with VAMP8.,tissue specificity:Highly expressed in heart. Also found in brain, kidney, liver, lung, placenta, skeletal muscle, spleen and pancreas.,

---

**Subcellular Location :** Membrane ; Single-pass type IV membrane protein . Preferentially associated with the early endosome. To a lesser extent, also present in late endosome, the plasma membrane and coated pits (By similarity). .

---

**Expression :** Highly expressed in heart. Also found in brain, kidney, liver, lung, placenta, skeletal muscle, spleen and pancreas.

---

**Sort :** 16763

---

**No4 :** 1

---

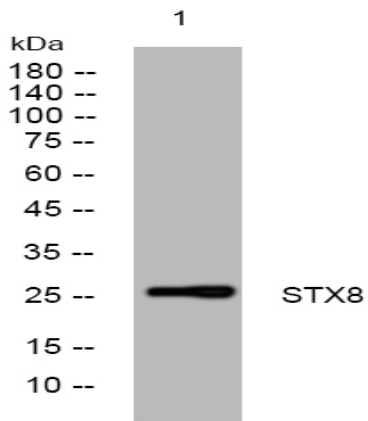
**Host :** Rabbit

---

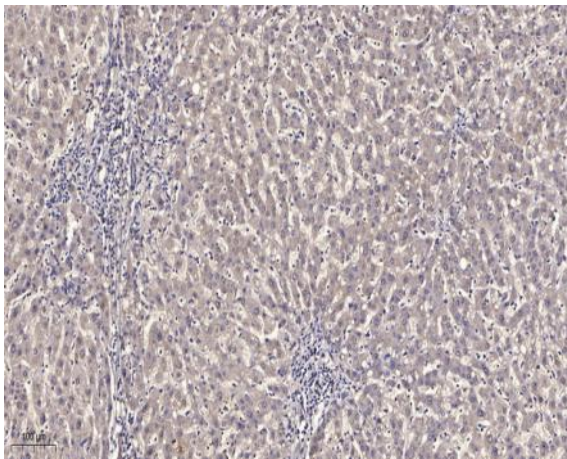
**Modifications :** Unmodified

---

## Products Images



Western blot analysis of lysates from HpeG2 cells, primary antibody was diluted at 1:1000, 4° over night



Immunohistochemical analysis of paraffin-embedded human liver cancer. 1, Antibody was diluted at 1:200(4° overnight). 2, Tris-EDTA,pH9.0 was used for antigen retrieval. 3,Secondary antibody was diluted at 1:200(room temperature, 45min).