

## EVX2 rabbit pAb

|                              |   |
|------------------------------|---|
| <b>Catalog No :</b>          | YT6428  |
| <b>Reactivity :</b>          | Human;Mouse   |
| <b>Applications :</b>        | WB  |
| <b>Target :</b>              | EVX2  |
| <b>Gene Name :</b>           | EVX2  |
| <b>Protein Name :</b>        | EVX2  |
| <b>Human Gene Id :</b>       | 344191  |
| <b>Human Swiss Prot No :</b> | Q03828  |
| <b>Mouse Gene Id :</b>       | 14029   |
| <b>Mouse Swiss Prot No :</b> | P49749  |
| <b>Immunogen :</b>           | Synthesized peptide derived from human EVX2 AA range: 138-188   |
| <b>Specificity :</b>         | This antibody detects endogenous levels of EVX2 at Human/Mouse  |
| <b>Formulation :</b>         | Liquid in PBS containing 50% glycerol, 0.5% BSA and 0.02% sodium azide.   |
| <b>Source :</b>              | Polyclonal, Rabbit,IgG  |
| <b>Dilution :</b>            | WB 1[?]500-2000   |
| <b>Purification :</b>        | The antibody was affinity-purified from rabbit antiserum by affinity-chromatography using epitope-specific immunogen. |
| <b>Concentration :</b>       | 1 mg/ml   |
| <b>Storage Stability :</b>   | -15°C to -25°C/1 year(Do not lower than -25°C)  |

**Molecularweight :** 52kD**Background :**

This gene is located at the 5' end of the HOXD gene cluster on chromosome 2. The encoded protein is a homeobox transcription factor that is related to the protein encoded by the Drosophila even-skipped (eve) gene, a member of the pair-rule class of segmentation genes. A 117 kb microdeletion at the 5' end of the HOXD gene cluster, which includes this gene and the HOXD9-HOXD13 genes, causes synpolydactyly, a dominantly inherited disease resulting in limb malformation. [provided by RefSeq, Sep 2009],

**Function :**

developmental stage:Expressed during early embryogenesis and neurogenesis in a biphasic manner.,similarity:Belongs to the even-skipped homeobox family.,similarity:Contains 1 homeobox DNA-binding domain.,

**Subcellular Location :**

Nucleus.

**Sort :**

5790

**No4 :**

1

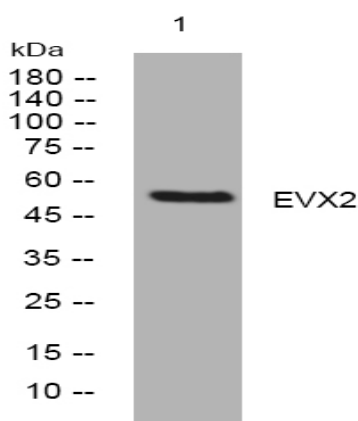
**Host :**

Rabbit

**Modifications :**

Unmodified

## Products Images



Western blot analysis of lysates from MCF-7 cells, primary antibody was diluted at 1:1000, 4° over night