

CPLX4 rabbit pAb

Catalog No :	YT6427
Reactivity :	Human;Mouse
Applications :	WB
Target :	CPLX4
Fields :	>>Synaptic vesicle cycle
Gene Name :	CPLX4
Protein Name :	CPLX4
Human Gene Id :	339302
Human Swiss Prot No :	Q7Z7G2
Mouse Gene Id :	225644
Mouse Swiss Prot No :	Q80WM3
Immunogen :	Synthesized peptide derived from human CPLX4 AA range: 47-97
Specificity :	This antibody detects endogenous levels of CPLX4 at Human/Mouse
Formulation :	Liquid in PBS containing 50% glycerol, 0.5% BSA and 0.02% sodium azide.
Source :	Polyclonal, Rabbit,IgG
Dilution :	WB 1[?]500-2000
Purification :	The antibody was affinity-purified from rabbit antiserum by affinity-chromatography using epitope-specific immunogen.
Concentration :	1 mg/ml

Storage Stability : -15°C to -25°C/1 year(Do not lower than -25°C)

Molecularweight : 18kD

Background : This gene likely encodes a member of the complexin family. The encoded protein may be involved in synaptic vesicle exocytosis. [provided by RefSeq, Jan 2009],

Function : function:Positively regulates a late step in synaptic vesicle exocytosis.,PTM:Farnesylation mediates presynaptic targeting and is important for function in neurotransmitter release.,similarity:Belongs to the complexin/synaphin family.,subcellular location:Enriched at the synaptic terminal.,subunit:Weakly binds to the SNARE core complex containing SNAP25, VAMP2 and STX1A.,

Subcellular Location : Cell junction, synapse . Cell membrane; Lipid-anchor . Enriched at the synaptic terminal. .

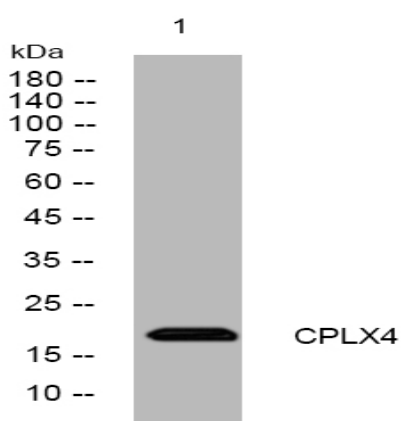
Sort : 4511

No4 : 1

Host : Rabbit

Modifications : Unmodified

Products Images



Western blot analysis of lysates from MCF-7 cells, primary antibody was diluted at 1:1000, 4° over night