

K1731 rabbit pAb

Catalog No :	YT6425
Reactivity :	Human;Mouse;Rat
Applications :	IHC;IF
Target :	K1731
Gene Name :	KIAA1731
Protein Name :	K1731
Human Gene Id :	85459
Human Swiss Prot No :	Q9C0D2
Mouse Gene Id :	319675
Mouse Swiss Prot No :	Q8BQ48
Rat Swiss Prot No :	A4L9P8
Immunogen :	Synthesized peptide derived from human K1731 AA range: 208-258
Specificity :	This antibody detects endogenous levels of K1731 at Human/Mouse/Rat
Formulation :	Liquid in PBS containing 50% glycerol, 0.5% BSA and 0.02% sodium azide.
Source :	Polyclonal, Rabbit,IgG
Dilution :	IHC 1:50-200. IF 1:50-200
Purification :	The antibody was affinity-purified from rabbit antiserum by affinity-chromatography using epitope-specific immunogen.
Concentration :	1 mg/ml

Storage Stability : -15°C to -25°C/1 year(Do not lower than -25°C)

Molecularweight : 286kD

Function : sequence caution:Translation N-terminally shortened.,similarity:Contains 7 LRR (leucine-rich) repeats.,

Subcellular Location : Cytoplasm, cytoskeleton, microtubule organizing center, centrosome, centriole . Cytoplasm, cytoskeleton, microtubule organizing center, centrosome . Cytoplasm, cytoskeleton, spindle . Cytoplasm, cytoskeleton . Associates with both of the converted centrioles during G1 but becomes more enriched at the newly formed daughter (or unconverted) centrioles during S, G2, and early M phases (PubMed:25131205, PubMed:32060285). In early S phase, localized at the procentriolar microtubule wall and enriched at the proximal ends of the centrioles in CENPJ- and CEP135-dependent manner (PubMed:27185865). Colocalizes with SASS6 and CEP250 proteins (PubMed:25131205). Colocalizes with CEP135 and CEP192 at the centrosomes (PubMed:27185865). Associates with interphase microtubules and mitotic spindles (PubMed:

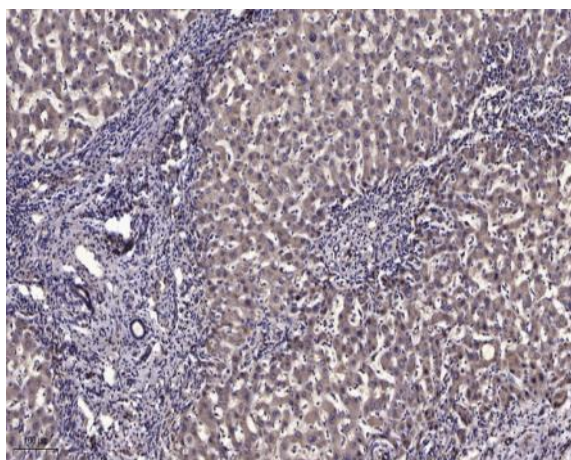
Sort : 8825

No4 : 1

Host : Rabbit

Modifications : Unmodified

Products Images



Immunohistochemical analysis of paraffin-embedded human liver cancer. 1, Antibody was diluted at 1:200(4° overnight). 2, Tris-EDTA,pH9.0 was used for antigen retrieval. 3,Secondary antibody was diluted at 1:200(room temperature, 45min).