

C8AP2 rabbit pAb

Catalog No :	YT6423
Reactivity :	Human;Mouse
Applications :	WB
Target :	C8AP2
Gene Name :	CASP8AP2 FLASH KIAA1315 RIP25
Protein Name :	C8AP2
Human Gene Id :	9994
Human Swiss Prot No :	Q9UKL3
Mouse Gene Id :	26885
Mouse Swiss Prot No :	Q9WUF3
Immunogen :	Synthesized peptide derived from human C8AP2 AA range: 1155-1205
Specificity :	This antibody detects endogenous levels of C8AP2 at Human/Mouse
Formulation :	Liquid in PBS containing 50% glycerol, 0.5% BSA and 0.02% sodium azide.
Source :	Polyclonal, Rabbit,IgG
Dilution :	WB 1[?]500-2000
Purification :	The antibody was affinity-purified from rabbit antiserum by affinity-chromatography using epitope-specific immunogen.
Concentration :	1 mg/ml
Storage Stability :	-15°C to -25°C/1 year(Do not lower than -25°C)

Molecularweight : 218kD

Background : This protein is highly similar to FLASH, a mouse apoptotic protein identified by its interaction with the death-effector domain (DED) of caspase 8. Studies of FLASH protein suggested that this protein may be a component of the death-inducing signaling complex that includes Fas receptor, Fas-binding adapter FADD, and caspase 8, and plays a regulatory role in Fas-mediated apoptosis. Alternative splicing results in multiple transcript variants encoding the same protein.[provided by RefSeq, Nov 2008],

Function : function:Participates in TNF-alpha-induced blockade of glucocorticoid receptor (GR) transactivation at the nuclear receptor coactivator level, upstream and independently of NF-kappa-B. Suppresses both NCOA2- and NCOA3-induced enhancement of GR transactivation. Involved in TNF-alpha-induced activation of NF-kappa-B via a TRAF2-dependent pathway. Acts as a downstream mediator for CASP8-induced activation of NF-kappa-B. Required for the activation of CASP8 in FAS-mediated apoptosis. Required for histone gene transcription and progression through S phase.,induction:By TNF-alpha, which induces strong nuclear localization.,PTM:Phosphorylated upon DNA damage, probably by ATM or ATR.,sequence caution:Contaminating sequence. Potential poly-A sequence starting in position 364.,subcellular location:Localizes to discrete nuclear foci.,subunit:Self-associates. Component of the death-inducing signalin

Subcellular Location : Cytoplasm. Nucleus. Nucleus, PML body. Mitochondrion. Exported from the nucleus to the mitochondria upon FAS activation.

Tag : orthogonal

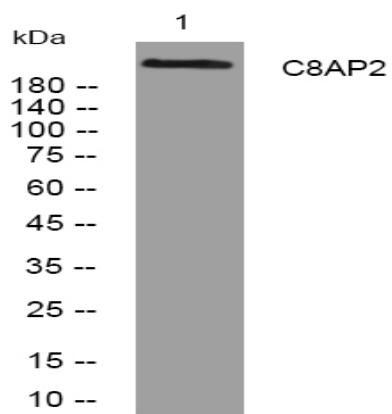
Sort : 722

No4 : 1

Host : Rabbit

Modifications : Unmodified

Products Images



Western blot analysis of lysates from HCT116 cells, primary antibody was diluted at 1:1000, 4° over night