

ICT1 rabbit pAb

Catalog No :	YT6421
Reactivity :	Human;Mouse
Applications :	WB
Target :	ICT1
Gene Name :	ICT1 DS1
Protein Name :	ICT1
Human Gene Id :	3396
Human Swiss Prot No :	Q14197
Mouse Gene Id :	68572
Mouse Swiss Prot No :	Q8R035
Immunogen :	Synthesized peptide derived from human ICT1 AA range: 7-57
Specificity :	This antibody detects endogenous levels of ICT1 at Human/Mouse
Formulation :	Liquid in PBS containing 50% glycerol, 0.5% BSA and 0.02% sodium azide.
Source :	Polyclonal, Rabbit,IgG
Dilution :	WB 1:500-2000
Purification :	The antibody was affinity-purified from rabbit antiserum by affinity-chromatography using epitope-specific immunogen.
Concentration :	1 mg/ml
Storage Stability :	-15°C to -25°C/1 year(Do not lower than -25°C)

Molecularweight : 23kD

Background : The protein encoded by this gene is a peptidyl-tRNA hydrolase and a vital component of the large mitochondrial ribosome. The encoded protein serves as a ribosome release factor for this ribosome, which translates mitochondrial genes. This protein may be responsible for degrading prematurely-terminated polypeptides and for reusing stalled ribosomes. Two transcript variants encoding different isoforms have been found for this gene. [provided by RefSeq, Dec 2014],

Function : similarity:Belongs to the prokaryotic/mitochondrial release factor family.,tissue specificity:Down-regulated during the in vitro differentiation of HT29-D4 colon carcinoma cells.,

Subcellular Location : Mitochondrion .

Expression : Down-regulated during the in vitro differentiation of HT29-D4 colon carcinoma cells.

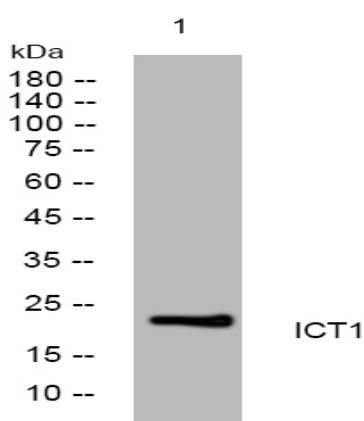
Sort : 8305

No4 : 1

Host : Rabbit

Modifications : Unmodified

Products Images



Western blot analysis of lysates from KB cells, primary antibody was diluted at 1:1000, 4° over night