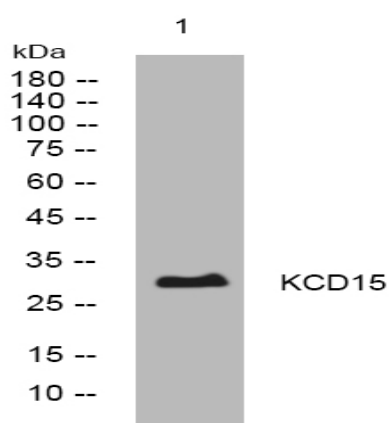


KCD15 rabbit pAb

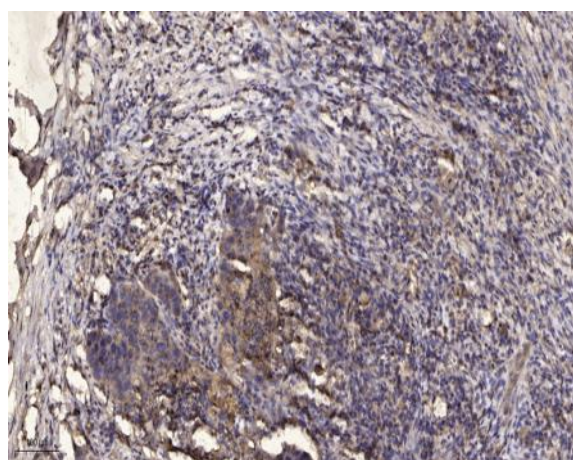
Catalog No :	YT6416
Reactivity :	Human;Mouse
Applications :	WB;IHC
Target :	KCD15
Gene Name :	KCTD15
Protein Name :	KCD15
Human Gene Id :	79047
Human Swiss Prot No :	Q96SI1
Mouse Gene Id :	233107
Mouse Swiss Prot No :	Q8K0E1
Immunogen :	Synthesized peptide derived from human KCD15 AA range: 201-251
Specificity :	This antibody detects endogenous levels of KCD15 at Human/Mouse
Formulation :	Liquid in PBS containing 50% glycerol, 0.5% BSA and 0.02% sodium azide.
Source :	Polyclonal, Rabbit,IgG
Dilution :	WB 1:500-2000;IHC 1:50-300
Purification :	The antibody was affinity-purified from rabbit antiserum by affinity-chromatography using epitope-specific immunogen.
Concentration :	1 mg/ml
Storage Stability :	-15°C to -25°C/1 year(Do not lower than -25°C)

Molecularweight : 31kD**Function :** similarity:Contains 1 BTB (POZ) domain.,**Subcellular Location :** Nucleus . In the brain, localizes to the arcuate hypothalamic nucleus, the ventromedial hypothalamic nucleus and the accumbens nucleus of the ventral striatum. .**Sort :** 8849**No4 :** 1**Host :** Rabbit**Modifications :** Unmodified

Products Images



Western blot analysis of lysates from U2OS cells, primary antibody was diluted at 1:1000, 4° over night



Immunohistochemical analysis of paraffin-embedded human Squamous cell carcinoma of lung. 1, Antibody was diluted at 1:200(4° overnight). 2, Tris-EDTA,pH9.0 was used for antigen retrieval. 3,Secondary antibody was diluted at 1:200(room temperature, 45min).