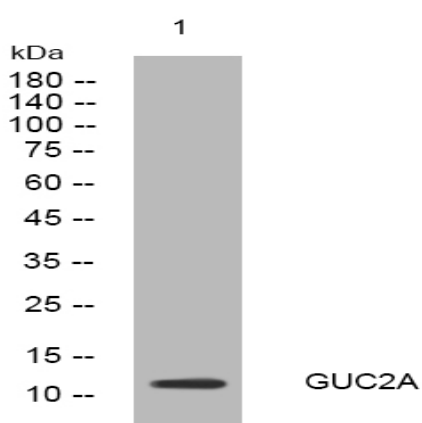


GUC2A rabbit pAb

Catalog No :	YT6415
Reactivity :	Human;Mouse;Rat
Applications :	WB
Target :	GUC2A
Gene Name :	GUCA2A GUCA2
Protein Name :	GUC2A
Human Gene Id :	2980
Human Swiss Prot No :	Q02747
Mouse Gene Id :	14915
Mouse Swiss Prot No :	P33680
Rat Gene Id :	25656
Rat Swiss Prot No :	P28902
Immunogen :	Synthesized peptide derived from human GUC2A AA range: 52-102
Specificity :	This antibody detects endogenous levels of GUC2A at Human/Mouse/Rat
Formulation :	Liquid in PBS containing 50% glycerol, 0.5% BSA and 0.02% sodium azide.
Source :	Polyclonal, Rabbit,IgG
Dilution :	WB 1:500-2000
Purification :	The antibody was affinity-purified from rabbit antiserum by affinity-chromatography using epitope-specific immunogen.

Concentration :	1 mg/ml
Storage Stability :	-15°C to -25°C/1 year(Do not lower than -25°C)
Molecularweight :	13kD
Function :	function:Endogenous activator of intestinal guanylate cyclase. It stimulates this enzyme through the same receptor binding region as the heat-stable enterotoxins.,similarity:Belongs to the guanylin family.,tissue specificity:Highly expressed in ileum and colon. Found in plasma.,
Subcellular Location :	Secreted.
Expression :	Highly expressed in ileum and colon. Found in plasma.
Sort :	7198
No4 :	1
Host :	Rabbit
Modifications :	Unmodified

Products Images



Western blot analysis of lysates from HeLa cells, primary antibody was diluted at 1:1000, 4° over night