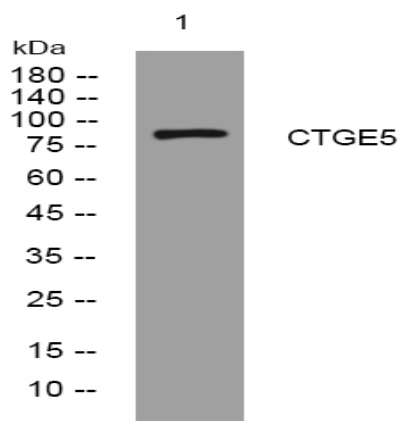


CTGE5 rabbit pAb

Catalog No :	YT6411
Reactivity :	Human;Mouse
Applications :	WB
Target :	CTGE5
Gene Name :	CTAGE5 MEA11 MEA6 MGEA11 MGEA6
Protein Name :	CTGE5
Human Gene Id :	4253
Human Swiss Prot No :	O15320
Mouse Swiss Prot No :	Q8R311
Immunogen :	Synthesized peptide derived from human CTGE5 AA range: 253-303
Specificity :	This antibody detects endogenous levels of CTGE5 at Human/Mouse
Formulation :	Liquid in PBS containing 50% glycerol, 0.5% BSA and 0.02% sodium azide.
Source :	Polyclonal, Rabbit,IgG
Dilution :	WB 1:500-2000
Purification :	The antibody was affinity-purified from rabbit antiserum by affinity-chromatography using epitope-specific immunogen.
Concentration :	1 mg/ml
Storage Stability :	-15°C to -25°C/1 year(Do not lower than -25°C)
Molecularweight :	88kD

Background :	<p>This gene encodes s receptor in the endoplasmic reticulum, which plays a role in the export of large pre-chylomicrons and pre-very low density lipoproteins (pre-VLDLs). Three major classes of transcripts are generated from this gene-melanoma inhibitory activity 2-specific transcripts, cTAGE family member 5-specific transcripts and transcripts that include exons from both these transcript species (TANGO1-like or TALI). Additionally, alternative splicing in these transcripts results in multiple transcript variants encoding multiple isoforms. [provided by RefSeq, Sep 2016],</p>
Function :	<p>disease:Autoantigen found several cancer types, including benign meningioma and cutaneous T-cell lymphoma (CTCL). Isoform 5A and isoform 5B are recognized by patients' sera with tumor specimen of various origins.,disease:Tumor-associated antigen found in several cutaneous T-cell lymphoma (CTCL). Also found in colorectal and breast carcinomas, head and neck squamous cell carcinomas and melanoma.,function:Tumor-associated antigen.,sequence caution:Translation N-terminally extended.,similarity:Belongs to the cTAGE family.,tissue specificity:At the protein level, isoform 5A is expressed only in testis. Other isoforms are expressed in several other normal tissues, including brain, muscle and cranial skin. Isoform 5A (at the protein level) and isoform 5B are expressed in cutaneous T-cell lymphoma (CTCL) cell lines, colorectal carcinomas, breast carcinomas and melanoma. Isoform 5B, but not isof</p>
Subcellular Location :	<p>endoplasmic reticulum membrane,membrane,integral component of membrane,endoplasmic reticulum exit site,</p>
Sort :	<p>4656</p>
No4 :	<p>1</p>
Host :	<p>Rabbit</p>
Modifications :	<p>Unmodified</p>

Products Images



Western blot analysis of lysates from SW480 cells, primary antibody was diluted at 1:1000, 4° over night