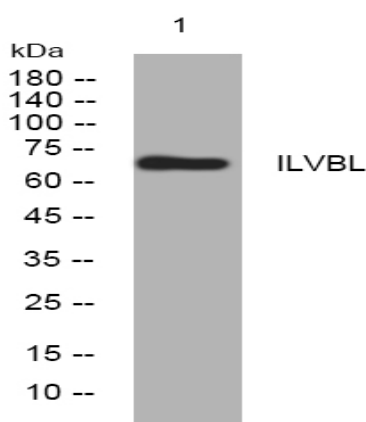


ILVBL rabbit pAb

Catalog No :	YT6407
Reactivity :	Human;Mouse
Applications :	WB
Target :	ILVBL
Gene Name :	ILVBL AHAS
Protein Name :	ILVBL
Human Gene Id :	10994
Human Swiss Prot No :	A1L0T0
Mouse Gene Id :	216136
Mouse Swiss Prot No :	Q8BU33
Immunogen :	Synthesized peptide derived from human ILVBL AA range: 87-137
Specificity :	This antibody detects endogenous levels of ILVBL at Human/Mouse
Formulation :	Liquid in PBS containing 50% glycerol, 0.5% BSA and 0.02% sodium azide.
Source :	Polyclonal, Rabbit,IgG
Dilution :	WB 1[?]500-2000
Purification :	The antibody was affinity-purified from rabbit antiserum by affinity-chromatography using epitope-specific immunogen.
Concentration :	1 mg/ml
Storage Stability :	-15°C to -25°C/1 year(Do not lower than -25°C)

Molecularweight : 70kD**Background :** The protein encoded by this gene shares similarity with several thiamine pyrophosphate-binding proteins identified in bacteria, yeast, and plants. The highest degree of similarity is found with bacterial acetolactate synthases (AHAS), which are enzymes that catalyze the first step in branched-chain amino acid biosynthesis. [provided by RefSeq, Jul 2008],**Function :** cofactor: Binds 1 magnesium ion per subunit., cofactor: Binds 1 thiamine pyrophosphate per subunit., sequence caution: Sequence of unknown origin at the C-terminus., sequence caution: Translation N-terminally extended., similarity: Belongs to the TPP enzyme family., tissue specificity: Expressed in all tissues tested, with highest expression in heart, pancreas and placenta.,**Subcellular Location :** Endoplasmic reticulum membrane ; Single-pass membrane protein .**Expression :** Expressed in all tissues tested, with highest expression in heart, pancreas and placenta.**Sort :** 8549**No4 :** 1**Host :** Rabbit**Modifications :** Unmodified

Products Images



Western blot analysis of lysates from U2OS cells, primary antibody was diluted at 1:1000, 4° over night