

SPIT3 rabbit pAb

Catalog No :	YT6406
Reactivity :	Human
Applications :	IHC;IF
Target :	SPIT3
Gene Name :	SPINT3
Protein Name :	SPIT3
Human Gene Id :	10816
Human Swiss Prot No :	P49223
Immunogen :	Synthesized peptide derived from human SPIT3 AA range: 14-64
Specificity :	This antibody detects endogenous levels of SPIT3 at Human
Formulation :	Liquid in PBS containing 50% glycerol, 0.5% BSA and 0.02% sodium azide.
Source :	Polyclonal, Rabbit,IgG
Dilution :	IHC 1:50-200. IF 1:50-200
Purification :	The antibody was affinity-purified from rabbit antiserum by affinity-chromatography using epitope-specific immunogen.
Concentration :	1 mg/ml
Storage Stability :	-15°C to -25°C/1 year(Do not lower than -25°C)
Molecularweight :	10kD
Function :	similarity:Contains 1 BPTI/Kunitz inhibitor domain.,

Subcellular Location : Secreted .

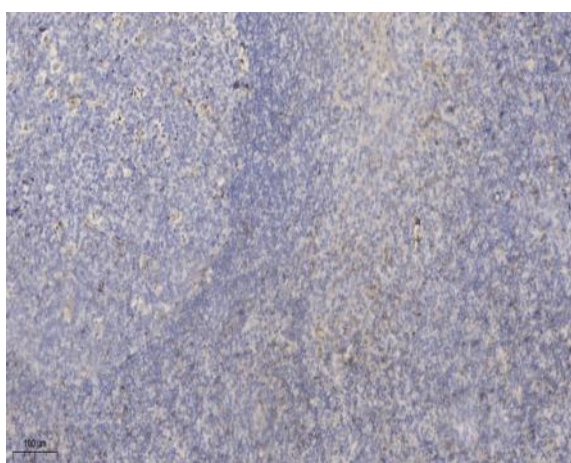
Sort : 16553

No4 : 1

Host : Rabbit

Modifications : Unmodified

Products Images



Immunohistochemical analysis of paraffin-embedded human tonsil. 1, Antibody was diluted at 1:200(4° overnight). 2, Tris-EDTA,pH9.0 was used for antigen retrieval. 3,Secondary antibody was diluted at 1:200(room temperature, 30min).