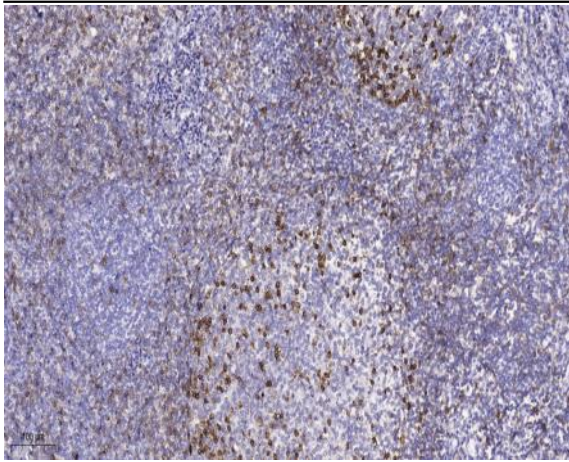


FXYD3 rabbit pAb

Catalog No :	YT6405
Reactivity :	Human;Mouse;Rat
Applications :	IHC;IF
Target :	FXYD3
Gene Name :	FXYD3 MAT8 PLML
Protein Name :	FXYD3
Human Gene Id :	5349
Human Swiss Prot No :	Q14802
Mouse Gene Id :	17178
Mouse Swiss Prot No :	Q61835
Rat Gene Id :	116831
Rat Swiss Prot No :	P59645
Immunogen :	Synthesized peptide derived from human FXYD3 AA range: 15-65
Specificity :	This antibody detects endogenous levels of FXYD3 at Human/Mouse/Rat
Formulation :	Liquid in PBS containing 50% glycerol, 0.5% BSA and 0.02% sodium azide.
Source :	Polyclonal, Rabbit,IgG
Dilution :	IHC 1:50-200. IF 1:50-200
Purification :	The antibody was affinity-purified from rabbit antiserum by affinity-chromatography using epitope-specific immunogen.

Concentration :	1 mg/ml
Storage Stability :	-15°C to -25°C/1 year(Do not lower than -25°C)
Molecularweight :	10kD
Background :	This gene belongs to a small family of FXYD-domain containing regulators of Na ⁺ /K ⁺ ATPases which share a 35-amino acid signature sequence domain, beginning with the sequence PFXYD, and containing 7 invariant and 6 highly conserved amino acids. This gene encodes a cell membrane protein that may regulate the function of ion-pumps and ion-channels. This gene may also play a role in tumor progression. Alternative splicing results in multiple transcript variants encoding distinct isoforms.[provided by RefSeq, Oct 2008],
Function :	function:Induces a hyperpolarization-activated chloride current when expressed in Xenopus oocytes. May be a modulator capable of activating endogenous oocyte channels.,miscellaneous:Marker of a cell type preferentially transformed by neu or ras oncoprotein.,similarity:Belongs to the FXYD family.,tissue specificity:Expressed in a subset of human breast tumors.,
Subcellular Location :	Cell membrane ; Single-pass type I membrane protein .
Expression :	Isoform 1: Expressed mainly in differentiated cells (at protein level). Isoform 2: Expressed mainly in undifferentiated cells (at protein level).
Sort :	6329
No4 :	1
Host :	Rabbit
Modifications :	Unmodified

Products Images



Immunohistochemical analysis of paraffin-embedded human tonsil. 1, Antibody was diluted at 1:200(4° overnight). 2, Tris-EDTA,pH9.0 was used for antigen retrieval. 3,Secondary antibody was diluted at 1:200(room temperature, 45min).