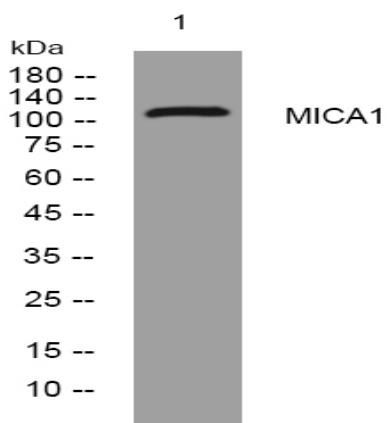


MICA1 rabbit pAb

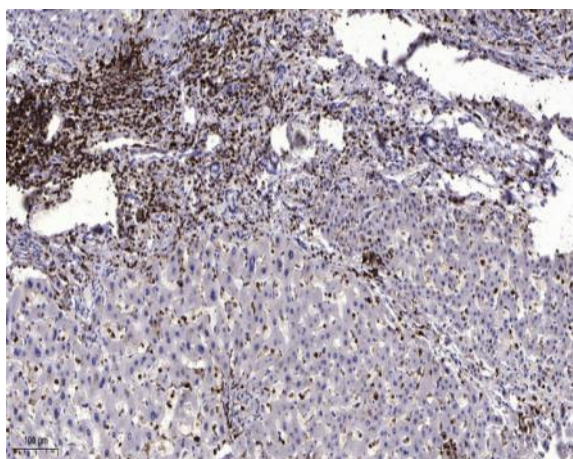
Catalog No :	YT6400
Reactivity :	Human;Mouse;Rat
Applications :	WB;IHC
Target :	MICA1
Gene Name :	MICAL1 MICAL NICAL
Protein Name :	MICA1
Human Gene Id :	64780
Human Swiss Prot No :	Q8TDZ2
Mouse Gene Id :	171580
Mouse Swiss Prot No :	Q8VDP3
Rat Gene Id :	294520
Rat Swiss Prot No :	D3ZBP4
Immunogen :	Synthesized peptide derived from human MICA1 AA range: 155-205
Specificity :	This antibody detects endogenous levels of MICA1 at Human/Mouse/Rat
Formulation :	Liquid in PBS containing 50% glycerol, 0.5% BSA and 0.02% sodium azide.
Source :	Polyclonal, Rabbit,IgG
Dilution :	WB 1:500-2000;IHC 1:50-300
Purification :	The antibody was affinity-purified from rabbit antiserum by affinity-chromatography using epitope-specific immunogen.

Concentration :	1 mg/ml
Storage Stability :	-15°C to -25°C/1 year(Do not lower than -25°C)
Molecularweight :	117kD
Background :	This gene encodes an enzyme that oxidizes methionine residues on actin, thereby promoting depolymerization of actin filaments. This protein interacts with and regulates signalling by NEDD9/CAS-L (neural precursor cell expressed, developmentally down-regulated 9). Alternative splicing results in multiple transcript variants. [provided by RefSeq, Aug 2015],
Function :	cofactor:FAD .,domain:The C-terminal coiled coil part contains the plexin-interacting region.,function:May be a cytoskeletal regulator that connects NEDD9 to intermediate filaments.,similarity:Contains 1 CH (calponin-homology) domain.,similarity:Contains 1 LIM zinc-binding domain.,subunit:Associates with the SH3 domain of NEDD9. Interacts with VIM and PLXNA3. Interacts with RAB1B.,tissue specificity:Expressed in the thymus, lung, spleen, kidney, testis and hematopoietic cells.,
Subcellular Location :	Cytoplasm. Cytoplasm, cytoskeleton. Midbody . Accumulates transiently at the abscission site before abscission occurs. .
Expression :	Expressed in the thymus, lung, spleen, kidney, testis and hematopoietic cells.
Sort :	9637
No4 :	1
Host :	Rabbit
Modifications :	Unmodified

Products Images



Western blot analysis of lysates from Hela cells, primary antibody was diluted at 1:1000, 4° over night



Immunohistochemical analysis of paraffin-embedded human liver cancer. 1, Antibody was diluted at 1:200(4° overnight). 2, Tris-EDTA,pH9.0 was used for antigen retrieval. 3,Secondary antibody was diluted at 1:200(room temperature, 45min).