

SEM3G rabbit pAb

Catalog No :	YT6399
Reactivity :	Human;Mouse
Applications :	WB;ELISA;IHC
Target :	SEM3G
Fields :	>>Axon guidance
Gene Name :	SEMA3G
Protein Name :	SEM3G
Human Gene Id :	56920
Human Swiss Prot No :	Q9NS98
Mouse Gene Id :	218877
Mouse Swiss Prot No :	Q4LFA9
Immunogen :	Synthesized peptide derived from human SEM3G AA range: 174-224
Specificity :	This antibody detects endogenous levels of SEM3G at Human/Mouse
Formulation :	Liquid in PBS containing 50% glycerol, 0.5% BSA and 0.02% sodium azide.
Source :	Polyclonal, Rabbit,IgG
Dilution :	WB 1:500-2000;IHC 1:50-300; ELISA 2000-20000
Purification :	The antibody was affinity-purified from rabbit antiserum by affinity-chromatography using epitope-specific immunogen.
Concentration :	1 mg/ml

Storage Stability : -15°C to -25°C/1 year(Do not lower than -25°C)

Molecularweight : 86kD

Background : The transcription of this gene is activated by PPAR-gamma, and the resulting protein product plays a role in endothelial cell migration. Expression of this gene also inhibits tumor cell migration and invasion. [provided by RefSeq, Jul 2016],

Function : function:Has chemorepulsive activities for sympathetic axons. Ligand of NRP2.,similarity:Belongs to the semaphorin family.,similarity:Contains 1 Ig-like C2-type (immunoglobulin-like) domain.,similarity:Contains 1 Sema domain.,

Subcellular Location : Secreted .

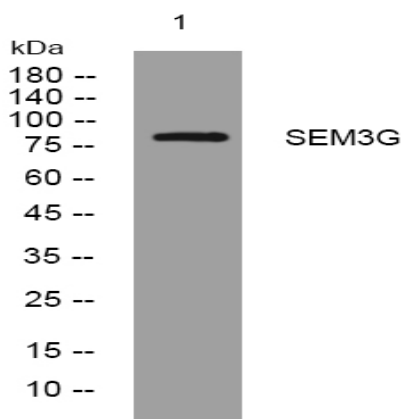
Sort : 16214

No4 : 1

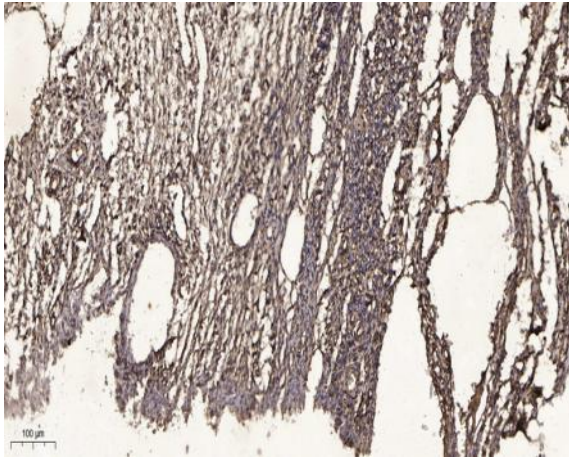
Host : Rabbit

Modifications : Unmodified

Products Images



Western blot analysis of lysates from SH-SY5Y cells, primary antibody was diluted at 1:1000, 4° over night



Immunohistochemical analysis of paraffin-embedded human oophoroma. 1, Antibody was diluted at 1:200(4° overnight). 2, Tris-EDTA,pH9.0 was used for antigen retrieval. 3,Secondary antibody was diluted at 1:200(room temperature, 45min).