

S4A5 rabbit pAb

Catalog No :	YT6397
Reactivity :	Human;Rat
Applications :	WB
Target :	S4A5
Fields :	>>Bile secretion
Gene Name :	SLC4A5 NBC4
Protein Name :	S4A5
Human Gene Id :	57835
Human Swiss Prot No :	Q9BY07
Rat Gene Id :	297386
Rat Swiss Prot No :	Q6RI88
Immunogen :	Synthesized peptide derived from human S4A5 AA range: 26-76
Specificity :	This antibody detects endogenous levels of S4A5 at Human/Rat
Formulation :	Liquid in PBS containing 50% glycerol, 0.5% BSA and 0.02% sodium azide.
Source :	Polyclonal, Rabbit,IgG
Dilution :	WB 1[?]500-2000
Purification :	The antibody was affinity-purified from rabbit antiserum by affinity-chromatography using epitope-specific immunogen.
Concentration :	1 mg/ml

Storage Stability : -15°C to -25°C/1 year(Do not lower than -25°C)

Molecularweight : 125kD

Background : This gene encodes a member of the sodium bicarbonate cotransporter (NBC) family, part of the bicarbonate transporter superfamily. Sodium bicarbonate cotransporters are involved in intracellular pH regulation and electroneutral or electrogenic sodium bicarbonate transport. This protein is thought to be an integral membrane protein. Multiple transcript variants encoding different isoforms have been found for this gene, but the biological validity of some variants has not been determined. [provided by RefSeq, Jul 2008],

Function : function:Mediates sodium- and bicarbonate-dependent electrogenic sodium bicarbonate cotransport, with a Na(+):HCO₃(-) stoichiometry of 2:1. May have a housekeeping function in regulating the pH of tissues in which it is expressed. May play a role in mediating Na(+):HCO₃(-) cotransport in hepatocytes and intrahepatic cholangiocytes. Also may be important in protecting the renal paranchyma from alterations in urine pH.,miscellaneous:Activity is inhibited by 4,4'-Di-isothiocyanatostilbene-2,2'-disulfonic acid (DIDS - an inhibitor of several anionic channels and transporters).,similarity:Belongs to the anion exchanger (TC 2.A.31) family.,subcellular location:Expressed in the apical plasma membrane domain of a subset of collecting ducts in the renal medulla.,tissue specificity:Highest expression observed in liver, spleen and testis; moderate expression in the choroid plexus, hippocampus, cere

Subcellular Location : Apical cell membrane ; Multi-pass membrane protein . Expressed in the apical plasma membrane domain of a subset of collecting ducts in the renal medulla. .

Expression : Highest expression observed in liver, spleen and testis; moderate expression in the choroid plexus, hippocampus, cerebrum and cerebellum of brain, and in kidney cortex and kidney medulla. Also observed in heart, pancreas, muscle, lung, placenta, stomach and small intestine. Weakest expression seen in peripheral blood lymphocytes, colon, duodenum, jejunum, ileum and skeletal muscle.

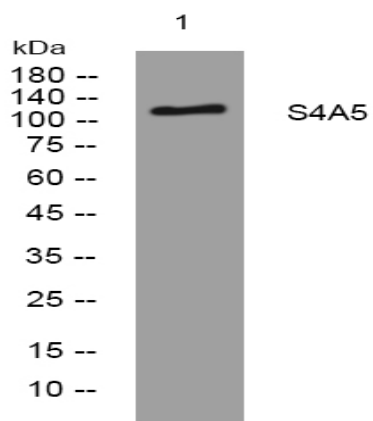
Sort : 14737

No4 : 1

Host : Rabbit

Modifications : Unmodified

Products Images



Western blot analysis of lysates from SH-SY5Y cells, primary antibody was diluted at 1:1000, 4° over night